

## E-ULISSE-CT-W

Dual Thermal / Day Night PTZ Camera



The **E-ULISSE-COMPACT-THERMAL-W** offers an integrated solution for high security applications even in total darkness, fog, rain and heavy smoke for round-the-clock video surveillance in a wide range of high security environments such as a perimeter protection, airports, coastlines, prisons and ports.

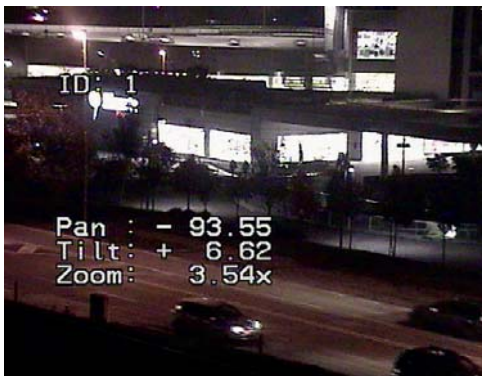
The unit combines an advanced thermal imaging camera and a Day/Night 36X zoom module, factory-aligned and installed within the same enclosure. The two cameras deliver high quality images regardless of lighting conditions.

The **E-ULISSE-COMPACT-THERMAL-W** features two independent video outputs and allows dual real-time vision for optimal monitoring of the area. The thermal camera is an Uncooled VOx and delivers 320x256 thermal images at 8.3fps or 25fps. It features 2x or 4x digital zoom.

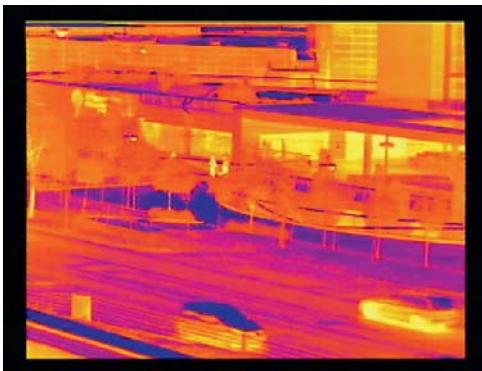
The **E-ULISSE-COMPACT-THERMAL-W** comes with a wiper that cleans both viewing windows.

### Features:

- Day/Night camera
- Integrated PTZ Driver
- Thermal sensor: uncooled VOx
- 35mm lens for thermal camera
- Dual independent video outputs
- Variable pan & tilt speed
- Continuous pan rotation
- 36x optical zoom capability for color camera
- Integrated wiper for both viewing windows



Colour (Night) Screenshot



Thermal Imaging Mode Screenshot



<b>Thermal Imaging Sensor:</b>	
Type:	Uncooled VOx microbolometer
Resolution:	320x256
Digital Zoom:	2x, 4x
Image Frequency:	8fps, 25fps
Viewing Angle:	Horiz: 13°, Vert: 10°
Human Detection:	780m away
Vehicle Detection:	2150m away
<b>Analog Zoom Camera:</b>	
Type:	Sony Day/Night 36x Zoom
CCD:	530TVL 1/4" Sony EXView HAD
Day Sensitivity:	0.1 lux
Night Sensitivity:	0.01 lux
Optical Zoom:	36x, f = 3.4 (wide) to 122.4mm (tele)
Advanced Masking:	24 x 3D Spherical Privacy Zones
<b>Mechanical and Electrical Specifications:</b>	
Construction:	Aluminium and tecnopolymer
Coating:	Epoxypolyester powder painting, RAL9002 colour
Thermal Window:	Geramanium
Mechanical Control:	Dynamic Positioning Control System
Backlash:	Zero
Easy Installation:	Self Centering Connector
Horizontal Rotation:	Continuous
Vertical Rotation:	-90° to +90°
Variable pan speed:	From 0.1° up to 200°/s
Variable tilt speed:	From 0.1° up to 200°/s
Input voltage:	24VAC 50Hz
Power consumption:	40W to 125W peak
Functions:	Autopan, Preset, Patrol, Tour (max 3), Autoflip
I/O alarm card (optional):	6 alarm inputs, 2 relay outputs
Operating temperature:	-40°C to +60°C
Improved surge immunity:	Up to 2KV line to line, up to 4KV line to earth (Class 4)
Weatherproof Rating:	IP66 (high pressure water jets from all directions, dust proof)
Weight:	12.5kg (excluding brackets and accessories)

## Ordering info:

Model:	Description:
E-ULISSE-COMPACT-THERMAL-36X-W	IP66 Dual Vision Integrated PTZ Thermal and Visual Zoom Camera
E-ULISSE-WB	Wall Mount Bracket
E-ULISSE-PMB	Pole Mount Adaptor Bracket for E-ULISSE-WB
E-ULISSE-PB	Parapet Mount Bracket