

## E-PTH311 / E-PTH911 Outdoor Side Mounting Pan/Tilt Units

The **E-PTH311** and **E-PTH911** are medium-duty or heavy-duty outdoor pan/tilt units which are suitable for loads up to 12/30kg. Made of die-cast aluminium, they have been tested for use in the harshest environmental conditions and are supplied with stainless steel screws. Horizontal and vertical limits can be preset inside the units preventing them from colliding with nearby objects.

Another feature is the auto-pan function which continually rotates the units horizontally. The strong Italian design and high reliable motors ensure these units are built to last. A suitable camera housing for the E-PTH311 is the E-HEB and for the E-PTH911, the E-HEG which can accommodate a camera with 10~200 mm zoom lens.

- ⊕ **Environmental Rating:** IP66
- ⊕ **Load:** 12 kg max (E-PTH311) 30 Kg (E-PTH911)
- ⊕ **Speed:** 6°/sec (H) 3°/sec (V)
- ⊕ **Operating Temp:** -20° to 50°C
- ⊕ Auto-pan function with delayed inversion
- ⊕ **Power:** 24VAC E-PTH311 (6.5W); E-PTH911 (8W)
- ⊕ **Weight:** 3.4 Kg (E-PTH311) 5.75 Kg (E-PTH911)
- ⊕ **External Dimensions:** 160 x 142 x 180 mm (E-PTH311) 192 x 198 x 284 mm (E-PTH911)



MODEL	Description
E-PTH311	Side Mounting Medium Duty Pan/Tilt Unit
E-PTH311P	As above with Presets
E-PTAC	Wall Mount Bracket for E-PTH311
E-PTH911	Side Mounting Heavy Duty Pan/Tilt Unit
E-PTH911P	As above with Presets
E-PTBC	Wall Mount Bracket for E-PTH911
E-PTPC	Top-Of-Pole Mount Bracket for E-PTH311/E-PTH911

## E-DTRX3 Advanced PTZ Driver with Preset Support

An extremely advanced PTZ driver, the **E-DTRX3** is meant for the remote control of pan/tilt/zoom (PTZ) cameras. Like its smaller brother, the E-DMTRX, it communicates with a controller via serial communication over twisted pair cable. Fourteen preset positions of pan/tilt/zoom adjustment can be recalled when used with PTZ cameras with preset feedback. The driver features controls for a camera with wiper, washer and pump.

- ⊕ **Environmental Rating:** IP56 Weatherproof Enclosure
- ⊕ RS232/485/Current Loop Control Interface
- ⊕ Control Outputs for Pan, Tilt, Zoom, Focus, Iris
- ⊕ **Auxiliary Outputs:** 2x Relay Outputs, 1x 12VDC, 1x 24VAC, 1x Wiper, 1x Washer Pump
- ⊕ **4 Alarm Inputs:** For camera preset positioning in case of alarm
- ⊕ Zoom Lens & Pan/Tilt Preset Support (14 Presets)
- ⊕ **PSU:** 24VAC @ 50W
- ⊕ **Weight:** 3.6 Kg
- ⊕ **Dimensions:** 337 x 237 x 128 mm



MODEL	Description
E-DTRX3	PTZ Driver with 17 functions and preset support

## Medium Range Pan/Tilt/Zoom Camera System



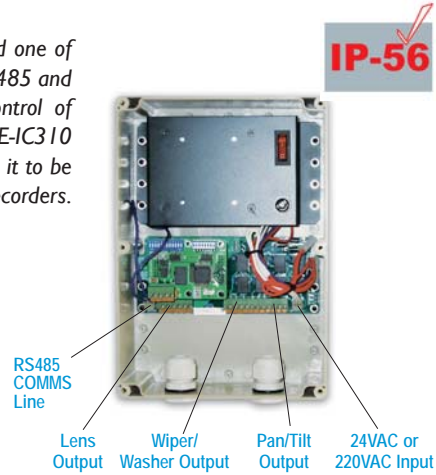
## Long Range Pan/Tilt/Zoom Camera System



## E-IC310 Low Cost Multi-Protocol PTZ Driver

The **E-IC310** is a PTZ driver which provides the interface between a control keyboard and one of our pan/tilt/zoom camera combinations. It communicates with the keyboard controller via RS485 and can be situated up to 1.2 kms away. Other features include auxillary outputs for control of wiper/washer camera functions, as well as, user defined outputs. The unique feature of the E-IC310 is it's capability to emulate the communication protocols of other manufacturers. This allows it to be used in existing systems with other makes of equipment such as controllers or digital video recorders.

- ⊕ **Protocols Supported:** Pelco P/D, VCL, Molyx, Diamond, Kalatel, Vicon, PR-1, Philips, American Dynamics
- ⊕ Support for Pelco-Coaxitron Protocol (E-IC310C) or Manchester Code - Bi-Phase
- ⊕ IP66 Weatherproof Enclosure
- ⊕ Zoom/Iris/Focus functions supported (12VDC Zoom Lenses)
- ⊕ **Pan/Tilt Driving Voltage:** 24VAC @ 500mA or 220VAC @500mA
- ⊕ **Communication:** RS485 (2400/4800/9600/19200bps)
- ⊕ **Operating Voltage:** 220VAC or 24VAC
- ⊕ 255 ID Addresses



MODEL	Description
E-IC310	Multi-Protocol PTZ driver
E-IC310C	Multi-Protocol PTZ driver with support for Pelco Co-Axitron Protocol

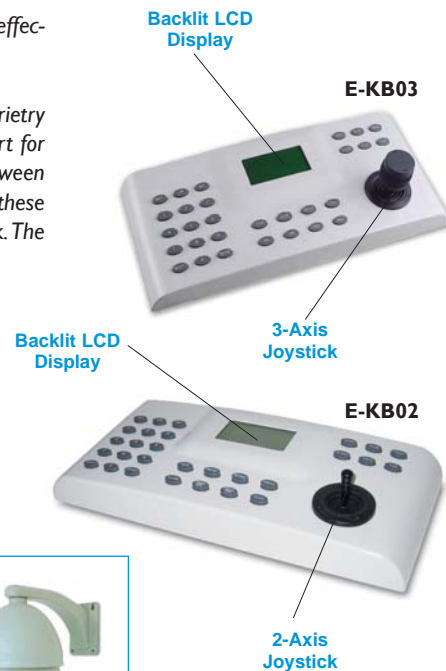


## E-KB02/E-KB03 Multi-Protocol PTZ/Speed Dome Control Keyboard

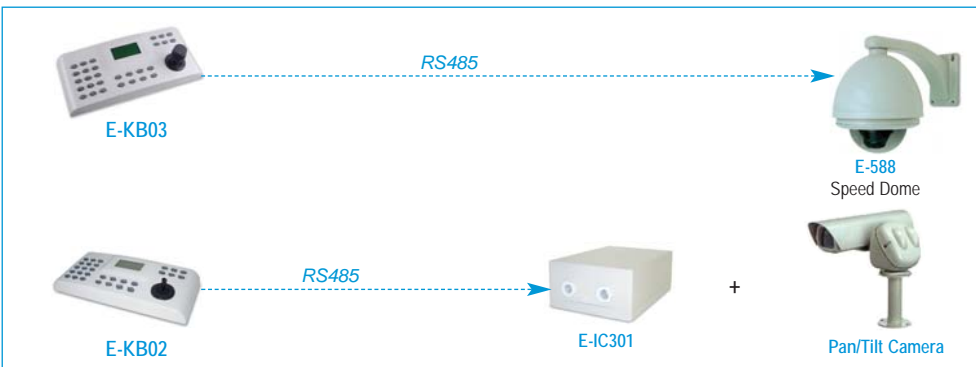
Designed specially to control our range of E-588 series speed domes, these keyboards are cost-effective and well designed for installations small and large.

Multi-protocol, the **E-KB02** and **E-KB03** can be programmed to operate on the E-588 propriety protocol or a range of other serial protocols such as Pelco-D. The E-588 protocol allows support for a multitude of ptz functions not supported under the Pelco-D protocol such as touring between presets, four different camera patrols and advanced camera setup. Ergonomically designed, these controllers feature an easy-to use keypad with a backlit display and three or two axis joystick. The three axis joystick features a twist axis which controls the zoom in/out.

- ⊕ Backlit LCD Display
- ⊕ Pan/Tilt/Focus/Zoom/Preset/Patrol Control
- ⊕ Single RS485 Interface (2400/4800/9600bps selectable)
- ⊕ **Power:** 9~12VDC
- ⊕ **Power Consumption:** 5W
- ⊕ **Weight:** 3.5 Kg
- ⊕ **Dimensions:** 360 x 160 x 45mm



### Typical Configurations



MODEL	Description
E-KB03	Stand-alone Speed Dome Controller - 3 axis Joystick
E-KB02	Stand-alone Speed Dome Controller - 2 axis Joystick

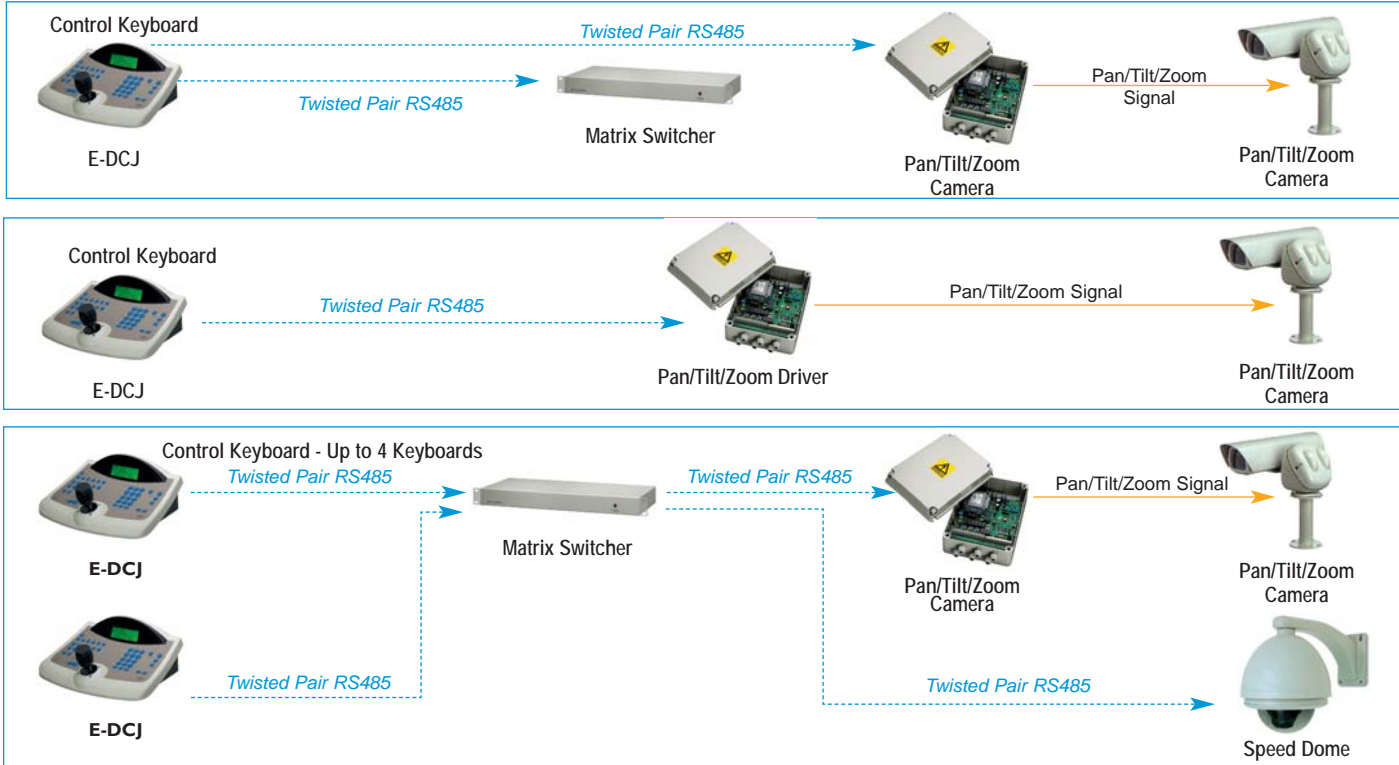
## E-DCJ PTZ/Speed Dome Camera & Matrix Control Keyboard with Joystick

The **E-DCJ** is the ultimate in terms of PTZ/Speed camera and matrix control. It can communicate and control any of our PTZ drivers and or speed dome cameras. The E-DCJ can also communicate with Sensormatic, Pelco, Samsung, Ernitec, Panasonic, Star and VCL speed domes. Communication between the PTZ camera, speed dome or matrix is via RS485 serial data. One is also able to use the E-DCJ to control our E-SM42A/82A, E-SM84A/164A and E-SM328A matrix switchers.

- ⊕ RS485 Serial communication with video matrix, PTZ driver and/or Speed Dome Camera
- ⊕ RS232 Serial communication with PC for software configuration upload and firmware update
- ⊕ 3-Axis joystick for PTZ camera control
- ⊕ Controls up to 999 PTZ Cams/Speed Domes
- ⊕ 2x Independent RS485 comms lines (for camera control)
- ⊕ LCD 20x4 back-lit display
- ⊕ 3 Different password levels
- ⊕ Configurable alarm or communication fault buzzer



### Typical Configurations



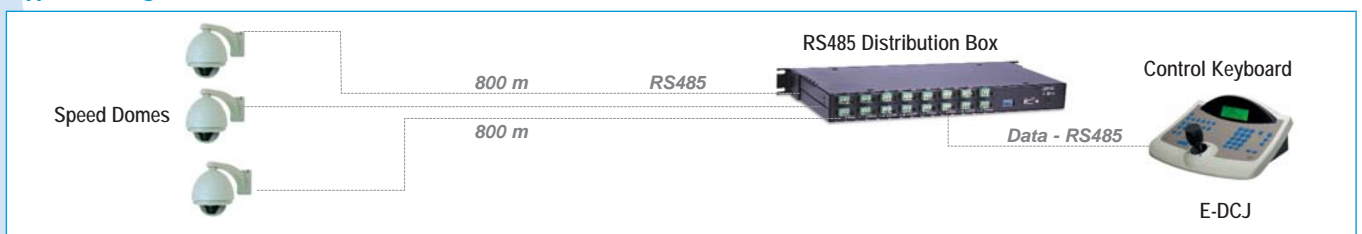
## E-DRHB RS485 Distribution Box

The **E-DRHB** is a rack mount data signal distribution box. It is used in applications which require an RS485 signal to be distributed in more than one direction or for applications in which the RS485 data network is greater than 1200 metres in total. This is typical on sites which have PTZ or Speed Dome cameras installed in star configurations. Several models are available, with 4, 8, or 16 RS485 outputs. The unit can accept an RS232 or RS485 signal from a controller.



- ⊕ RS232 or RS485 input
- ⊕ 4, 8, 16 RS485 outputs
- ⊕ 3 Pin screw terminal connector
- ⊕ **Power:** 12 VAC or 12 VDC (@24W)
- ⊕ **Dimensions:** 430 x 210 x 44 mm

### Typical Configuration



## E-DCT Programmable Touchscreen Joystick Controller

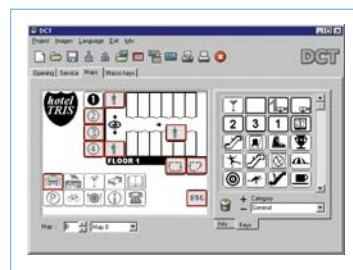
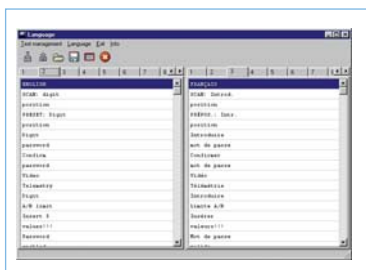
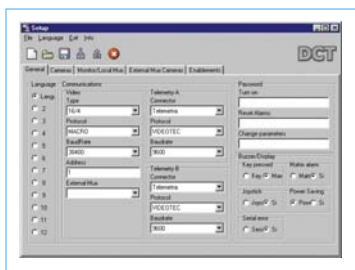
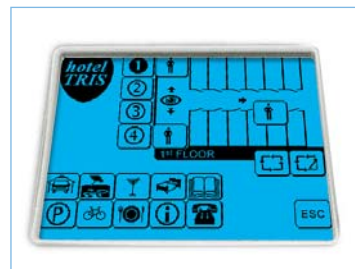
The **E-DCT** is the ultimate in terms of joystick controller. It features a fully graphical touchscreen display and 3-axis joystick controller. Up to 30 user maps and 40 macro keys can be pre-programmed into the unit. This is extremely useful in control room situations, to improve operator response and ease-of-use.

Maps showing the installation or camera placement can be imported using customisable graphics and/or icons. With the addition of graphical keys it provides a virtual map when uploaded to the E-DCT. All maps and programming is uploaded via the RS232 port. Easy control of PTZ cameras or speed domes is made possible via the joystick and touchscreen. The user is able to pan, tilt and zoom, as well as move between camera presets, do camera set-up or define or start a camera patrol.



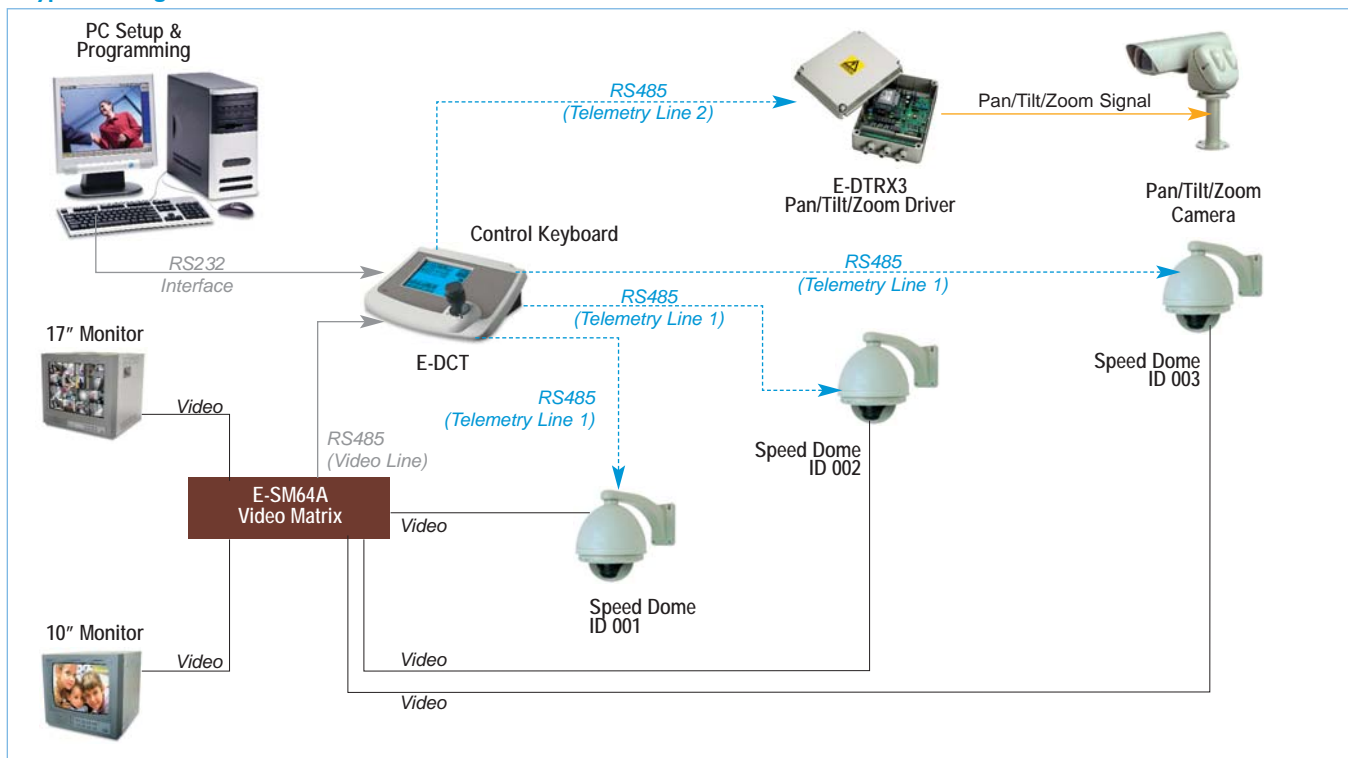
E-DCT

- ⊕ Up to 30 Customisable Maps with 40 keys per map
- ⊕ Customisation of start-up and service pages
- ⊕ Macro function keys (Max 20)
- ⊕ Matrix Switch Control E-SM42A-82A, E-SM84A-164A, E-SW328
- ⊕ Three independent RS485 telemetry lines
- ⊕ RS232 interface for PC connection and programming
- ⊕ Support for E-DTRX3 or E-IC310 PTZ driver
- ⊕ Elbex, JVC, Panasonic, Pelco, Sensormatic, VCL, Elmo, Htron & Samsung Speed Domes Supported
- ⊕ Three Axis Joystick (Pan/Tilt/Zoom)
- ⊕ 3 x RJ-11 Connectors (Telemetry), 1 x DB9 (RS232)
- ⊕ 320 x 240 pixel back-lit white LED display
- ⊕ 12VDC @ 1A Power Consumption
- ⊕ Dimensions: 298 x 107 x 210 mm



Screen Capture Shots of Programming Software

### Typical Configuration



**MODEL**  
E-DCT

**Description**  
Programmable Touchscreen Joystick Controller