

Quick Installation Guide

for

E-DVR-402/1602

E-DVR-804HB

E-DVR-1606/1625





1. Insert a flash disk.



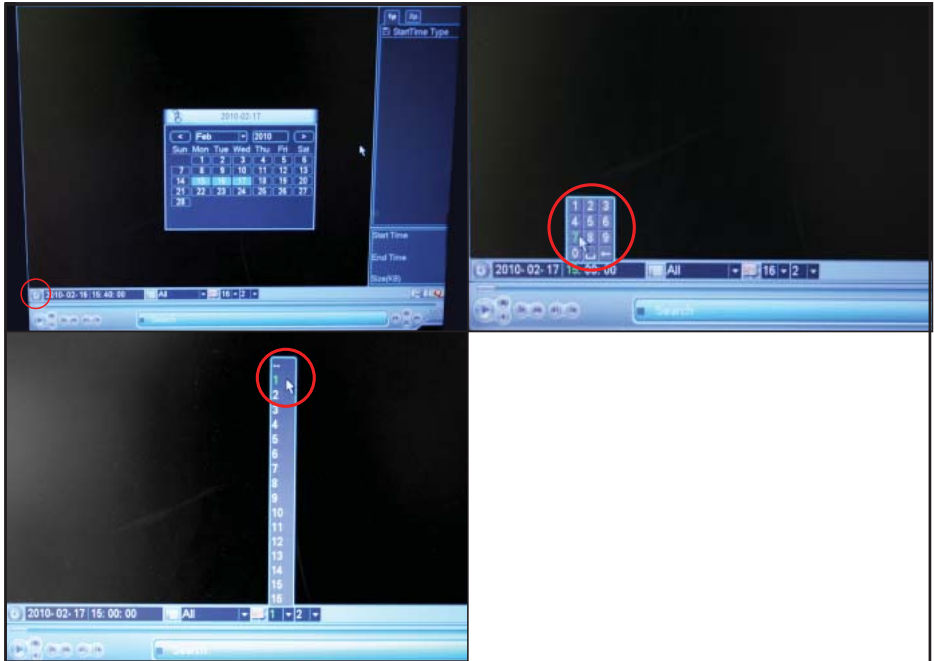
2. Or insert a DVD disk.



3. Right click on the mouse.



4. Select Search Function.

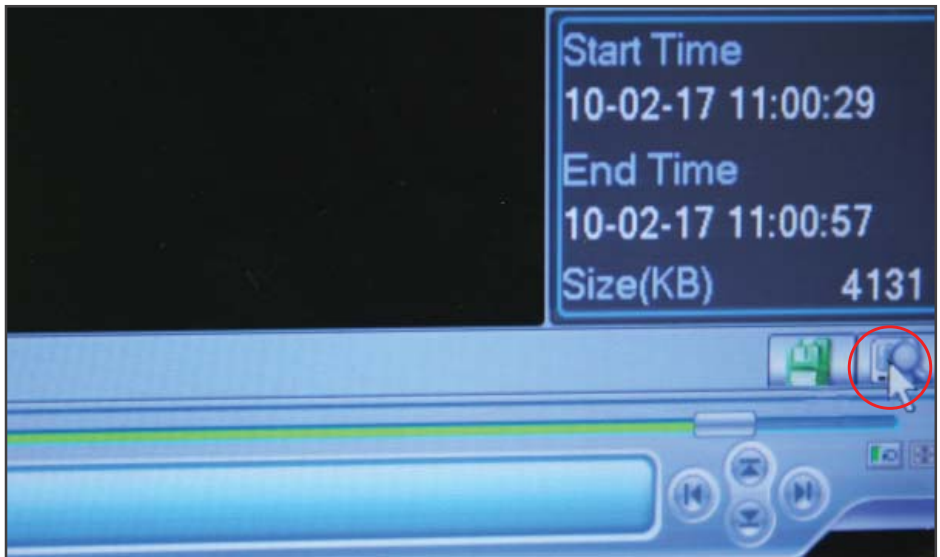


5. Select:

5.1. The date by selecting the clock on the left-hand corner

5.2. Time

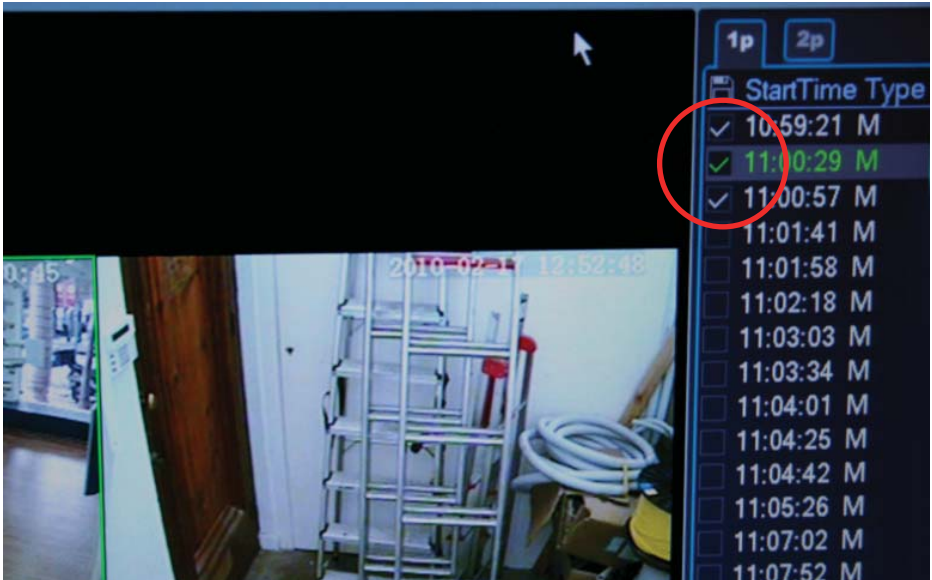
5.3. Camera number



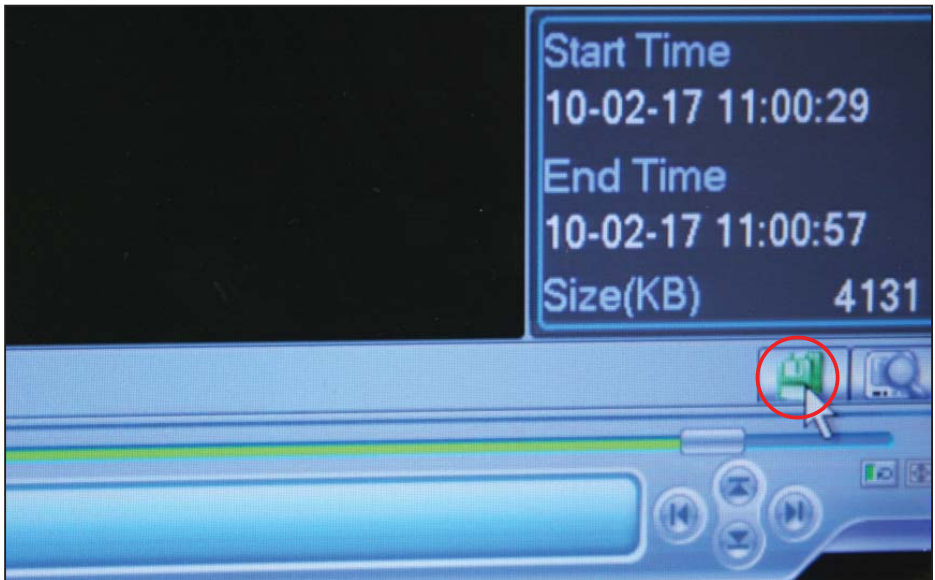
6. Click on the search function.



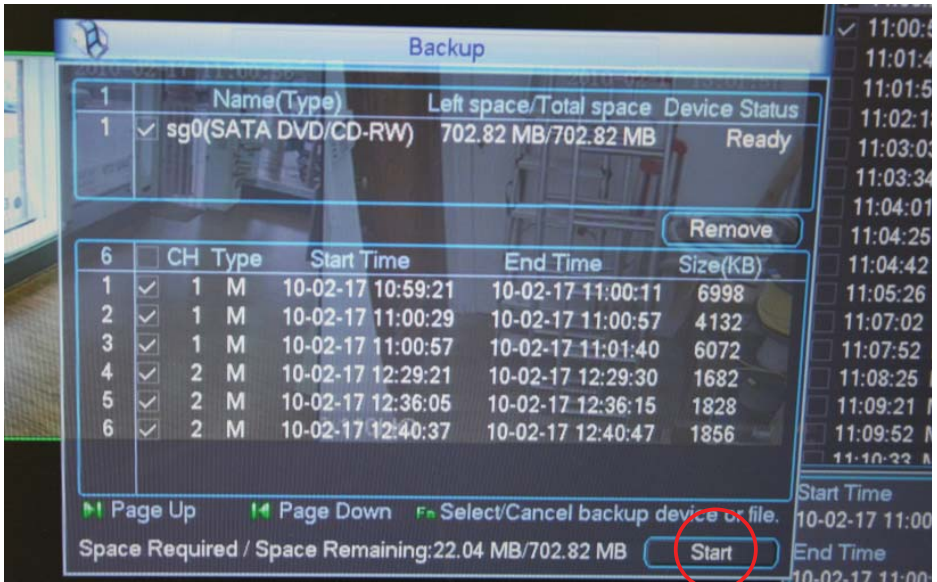
7. A list of Recordings will appear.



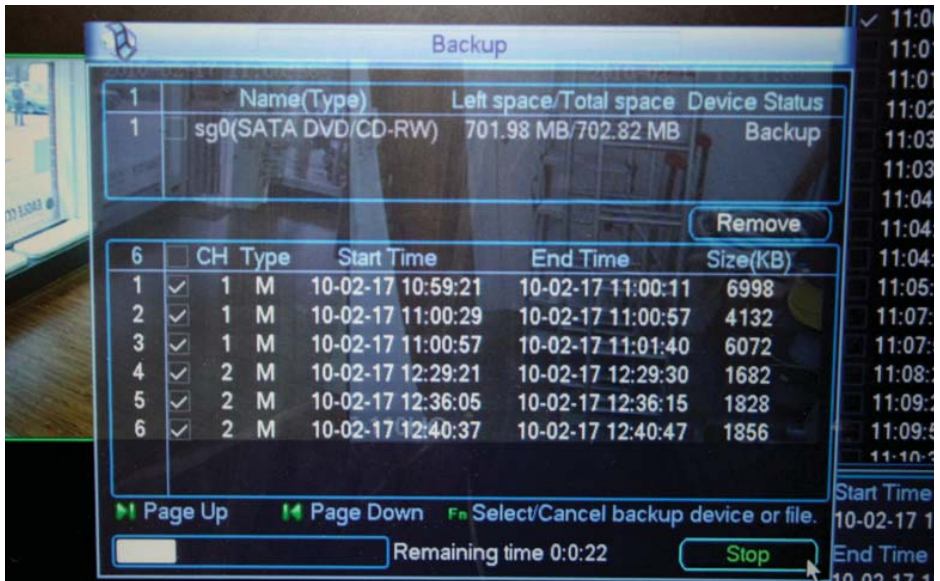
8. Tick the box next to the recording you want to back-up.



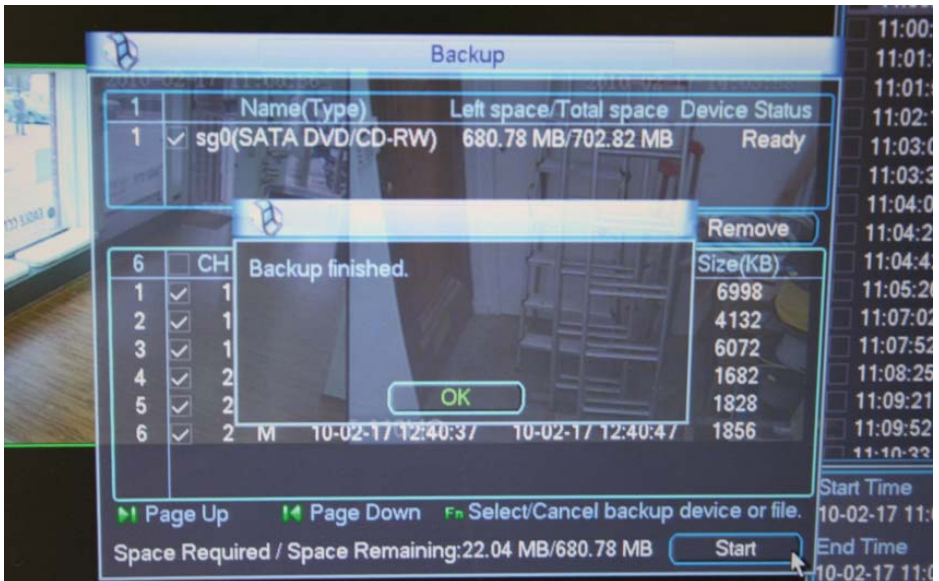
9. Press the back-up button to start the back-up.



- 10.1. A list of connected back up devices will be shown.
- 10.2. Select the backup device and click the Start button.



11. Back-up will start and show a progress page.



12. A completed screen will appear when the back-up is finished.

EagleCCTV Cape Town Head Office
 Tel: +27 21 423 4943
 Fax: +27 21 424 4637
 Toll Free: 0800 233 322 (RSA Only)
 24 Burg Street, Cape Town, 8001

EagleCCTV Centurion
 Tel: +27 12 653 8830
 Fax: +27 12 653 3281
 Unit 2, 23 Venturi Crescent,
 Hennopsark, Centurion

email: cctv@eagle.co.za
 website: www.eaglecctv.co.za