

CCTV

Shortform

CATALOGUE 2



E-811H

Compact Colour Mini Camera with Pinhole Lens



MODEL	E-811H
Lens	3.7 mm /F2.0 Super-Cone Pinhole
Sensor	1/4" Sharp Colour CCD
Pixel Format (H x V)	512 x 582
Resolution	380 Horiz TVL
Min. Illumination	1 lux (F2.0)
S/N Ratio	More than 48 dB (AGC off)
Electronic Shutter	1/50 to 1/100,000 sec.
Gamma	0.45
Viewing Angle	51°
Video Output	1 V p-p composite, 75 ohm
Audio Microphone	Yes
Voltage & Current	12 VDC; 120 mA
Weight	40 g
Dimensions (mm)	30 (W) x 30 (H) x 20 (D)

E-253CH-P37/B36

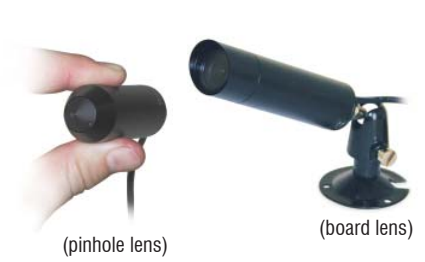
High Resolution Colour Mini Cameras



MODEL	E-253CH-P37	E-253CH-B36
Lens	3.7 mm Super Cone Pinhole	3.6 mm Board Lens
Sensor	1/3" Sharp CCD	
Pixel Format (H x V)	752 (H) x 582 (V)	
Resolution	480 Horiz TVL	
S/N Ratio	Greater than 50 dB (AGC off)	
Min. Illumination	0.8 lux (F2.0)	
Video Output	1Vp-p 75 ohm Composite Video (PAL)	
Voltage & Current	12 VDC; 80 mA (±3V)	
Operating Temp.	-10° C ~ +50° C	
Weight	70 g	
Dimensions (mm)	25 x 25 x 20.5	

E-21CHQX-B36

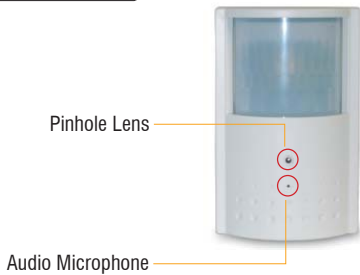
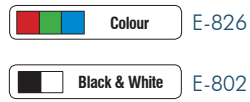
Day / Night Bullet Cameras



MODEL	E-21CHQX	E-21CHQX-B36
Lens	3.7 mm (F2.0) Super Cone Pinhole Lens	3.6 mm (F2.0) Board Mount Lens
Sensor	1/3" Sony Colour SS-HQ1	1/3" Sony Colour SS-HQ1
Lens Angle	67°	67°
Resolution	520 TVL	520 TVL
Min. Illumination	0.1 lux (F2.0)	0.1 lux (F2.0)
Day/Night Switch Over At	2 Lux	2 Lux
IR Sensitivity	850~880 nm (Both models)	
S/N ratio	50 dB (AGC off)	50 dB (AGC off)
Voltage & Current	9 ~ 15 VDC; 130 mA	9 ~ 15 VDC; 130 mA
Operating Temp	-10° C ~ +50° C	-10° C ~ +50° C
Weight	150 g	255 g
Dimensions (mm)	21 (Diam.) x 65 (L)	21 (Diam.) x 71 (L)

E-802 / E-826

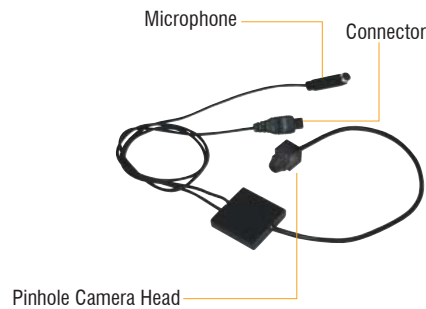
PIR Camera



MODEL	E-802	E-826
Lens	3.7 mm (F2.0) Pinhole	3.7 mm (F2.0) Pinhole
Sensor	1/3" (Black & White)	1/4" Sony (Colour)
Viewing Angle	65°	51°
Resolution	380 TVL	350 TVL
Min. Illumination	0.25 lux (F2.0)	1 lux (F2.0)
S/N Ratio	48 dB	48 dB
PIR Sensor Range	110° @ 12 m	110° @ 12 m
Relay Contact Output	N.C/N.O 30 VDC @ 5 A	N.C/N.O 30 VDC @ 5 A
Voltage & Current	12 VDC; 150 mA	12 VDC; 150 mA
Audio Microphone	Yes	Yes
Dimensions (mm)	110 (L) x 70 (W) x 49 (D)	110 (L) x 70 (W) x 49 (D)

E-C470-3C-A

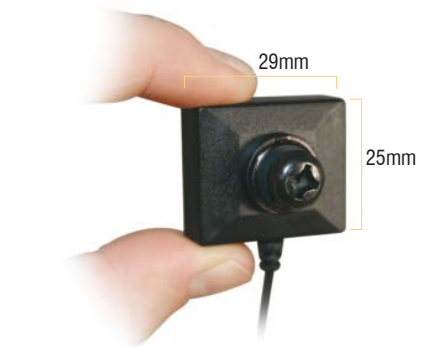
Colour CCD 'Snake Camera' With Audio



MODEL	E-C470-3C-A
Lens	3.7 mm Cone Pinhole
Sensor	1/4" CCD
Colour or Mono	Colour
Viewing Angle	58°
Resolution	350 TVL
Min. Illumination	1.2 lux (F2.0)
Audio	High Sensitive Microphone
S/N Ratio	< 48 dB
Voltage & Current	12 VDC; 70 mA
Operating Temp.	-10° C ~ +45° C
Dimensions: Head (mm)	11(W) x 11(H) x 18(D)
Dimensions: Electronics	29(W) x 29(H) x 7(D)

E-HEAD-CAM

Mini Pinhole Camera with Inter-Changeable Heads



MODEL	E-HEAD-CAM
Lens	4.3 mm Pinhole Lens (F2.0)
Sensor	1/4" Sony CCD Sensor
Resolution	480 TVL
S/N Ratio	48dB
Illumination	0.8 Lux (F2.0)
Audio Microphone	60 dbm sensitivity
Video Output	1V p-p 75ohm
Audio Output	2Vp-p 10KHz
Voltage & Current	5VDC 250 mA
Compatible DVR's	E-M5DVR, E-M6DVR, E-M8DVR
Dimensions (mm)	29 (W) x 25 (H) x 19 (T)
Weight	30g

E-262

Low Cost Colour Dome Camera with 3.6mm Board Lens



MODEL	E-262
Lens	3.6 mm (F2.0) Board
Sensor	1/4" Colour Sharp CCD
Viewing Angle	52°
Resolution	350 TVL
S/N Ratio	48 dB
Min. Illumination	0.6 lux (F2.0)
Auto White Balance	Yes
Voltage & Current	12 VDC; 100 mA
Dimensions (mm)	100 (Diam.) x 60 (H)

E-83KR11P-CB

High Resolution Colour Dome Camera



MODEL	E-83KR11P-CB
Lens	3.6 mm (F2.0) Board
Sensor	1/3" CCD
Colour or Monochrome	Colour
Viewing Angle	67°
Resolution	470 TVL
S/N Ratio	52 dB (min.); 60 dB (typ.) (AGC off)
Min. Illumination	0.8 lux (F2.0)
Auto White Balance	Yes
Voltage & Current	12 VDC; 120 mA
Dimensions (mm)	109 (Diam.) x 90 (H)

E-902

Medium Resolution Colour Dome Camera with Vari-Focal Auto Iris Lens



MODEL	E-902
Lens	3.5 ~ 8 mm Auto Iris Vari-focal Lens
Sensor	1/3" Colour Sony CCD
Resolution	420 TVL
Min. Illumination	1 lux
S/N Ratio	48 dB (AGC off)
Voltage & Current	8~16 VDC 120 mA (12 VDC recommended for best operation)
Operating Temp	-20° C ~ +70° C
Dimensions (mm)	83 (L) x 110 (Diam.)

E-904

High Resolution Colour Dome Camera with Vari-Focal Auto Iris Lens



MODEL	E-904
Lens	4 ~ 9 mm Vari-focal Auto-Iris
Sensor	1/3" Sony Colour CCD
Resolution	480 TVL
S/N	> 48 dB
Auto White Balance	On/Off
Backlight Compensation	On/Off
Auto Gain Control	On/Off
Min. Illumination	0.5 Lux (F1.6)
Min. Illumination	Auto 2500 ~ 9500K
Iris	F1.6 - 360
Audio	Integrated Pre-Amplified Microphone
Voltage & Current	12 VDC; 100 mA
Operating Temp.	0° C ~ 50° C
Weight	27 g
Dimensions (mm)	131 (W) x 85 (H) X 122 (L)

E-90CSHRX

Vandal Proof Auto-Iris Day/Night Infra-Red Dome Camera



MODEL	E-90CSHRX
Lens	4 ~ 9 mm vari-focal DC Auto Iris (F1.6 ~ 360)
Sensor	1/3" Sony Ex-View CCD
Resolution	480 TVL
Backlight Compensation	Automatic (On/Off Selectable)
Auto Gain Control	Automatic (On/Off Selectable)
Auto White Balance	Automatic (2500 ~ 9500K)
S/N Ratio	> 48 dB
Infra-Red LEDs	21 (850 nm ± 5~8 Metres)
Day/Switch Over	2 Lux
Voltage & Current	10.5 ~ 14 VDC; 150 mA
Weight	225 g
Dimensions (mm)	127 (Diam.) x 105 (L)

E-646

High Resolution Smoke Detector Camera



MODEL	E-646
Lens	4.3 mm (F2.0) Board
Sensor	1/3" Colour CCD
Viewing Angle	52°
Resolution	520 TVL
Min. Illumination	0.2 lux (F2.0)
S/N Ratio	50 dB
Voltage & Current	12 VDC; 160 mA
Dimensions (mm)	130 (Diam.) x 60 (H)

* Available with Audio on request

E-6020PSC-DN-12V

IP68 Day/Night Underwater Camera



MODEL	E-6020PSC-DN-12V
Lens	3.6 mm (F2.0) Board
Sensor	1/3" Sony ExView HAD CCD
Viewing Angle	67°
S/N Ratio	50 dB (AGC off)
Resolution	480 TVL
Min. Illumination	0.05 lux (F2.0)
Day/Night Mode	On at 2 lux
White Balance	2400° K ~ 10000° K
BLC	Automatic
Video Output	1V p-p 75 ohm
Waterproof Rating	(IP68) or (3PSI)
Operating Temp	-10° C ~ +50° C
Voltage & Current	12 VDC; 250 mA
Dimensions (mm)	110 (L) x 32 (Diam.)

E-536

Infra-Red Waterproof Camera -
3~5 m Range



MODEL	E-536
Lens	3.6 mm (F2.0) Board
Sensor	1/4" Colour Sony CCD
Resolution	350 TVL
IR Illumination	24x IR LEDs (850 nm; ± 3-5 m range, 4 m typically)
S/N Ratio	48 dB (AGC off)
Voltage & Current	12 VDC; 100 mA (350 mA with IR on)
Operating Temp	-10° to +50° C
IP Rating	IP65
Dimensions (mm)	54 (Diam.) x 82 (L)

E-539

Infra-Red Waterproof Colour Camera -
5~8 m Range



MODEL	E-539
Lens	6mm (F2.0) Board
Sensor	1/3" Colour Sony CCD
Resolution	420 TVL
Min. Illumination	0 lux (LEDs switch on 2 lux)
IR Illumination	25x IR LEDs (850 nm; ±5~8 m range, 8 m typically)
S/N Ratio	48 dB (AGC off)
Operating Temp.	-20° C ~ +70° C
Voltage & Current	8~16 VDC; 120 mA (300 mA with IR on) 12 VDC is best
Dimensions (mm)	78.5 (H) x 85 (Diam.) x 160 (L) with sunshield

E-559

Weatherproof IR Day/Night Camera -
3.8~9.5mm Lens



MODEL	E-559
Lens	3.8~9.5mm Auto Iris Lens
Sensor	1/3" Sony HQ Series CCD
Resolution	520TVL
IR Effective Range	12m
Mechanical Day/Night Filter	Yes (ICR)
Voltage & Current	12 VDC
IP Rating	IP66

Includes High Quality Internal Cable Channel Mounting Bracket

E-569

Weatherproof IR Day/Night Camera -
9~22mm Lens



MODEL	E-569
Lens	9~22mm Auto Iris Lens
Sensor	1/3" Sony HQ Series CCD
Resolution	520TVL
IR Effective Range	15m
Mechanical Day/Night Filter	Yes (ICR)
Voltage & Current	12 VDC; 170mA
IP Rating	IP66

Includes High Quality Internal Cable Channel Mounting Bracket

E-VULCAN-803

Integrated Colour Day/Night Camera
with Dual IR Illuminator



MODEL	E-VULCAN-803
Sensor	1/4" Sony Hyper HAD CCD
Horiz Resolution	480TVL
Video Output	PAL 1Vp~p 75ohm
Lens	30x Optical (3.3~99mm)
Aperature	F1.6 (3.3mm) F3.2 (99mm)
Minimum Focus Distance	10cm
Focus	Auto or Manual
Day/Night Filter	Mechanical
Slow Shutter	Yes (Off or upto x128)
IR Illuminator	Dual IR Lamps (LED, 850nm, 30°)
IR Range	30m Max (25m effective)
Control Interface	RS485 (Pelco D Control)
Voltage & Current	12VDC
Integrated Fan & Heater	Yes
Weatherproof Rating	IP65
Dimensions (mm)	272 x 22 x 357
Weight	3.2Kg

E-6311XP / E-6311XP-H

Low Light CS Mount Colour Camera - Standard & High Resolution Models



MODEL	E-6311XP / E6311XP-H
Sensor	1/3" Colour Matsushita CCD
Resolution (Standard)	380TVL Horizontal (470 with DSP enhancement)
Resolution (Hi-Res)	480 TVL Horizontal (520 with DSP enhancement)
White Balance Mode	ATW/AWC Switchable (Zero colour rolling)
White Balance Range	3200 - 10000°K
Min. Illumination	0.2 lux (F1.0); 0.4 lux (F1.4); 0.6 lux (F1.6)
S/N Ratio	60 dB (typ.) 52 dB (min.) (AGC off)
Electronic Shutter	1/50-1/120,000 sec
Iris Type	Automatic Electronic Shutter (AES) Direct Drive or Video Drive Auto Iris (DC)
Voltage & Current	12 VDC; 160 mA
Operating Temp.	-20° C ~ +55° C
Weight	360 g
Dimensions (mm)	50 (W) x 64.5 (H) x 116 (L)

E-63V5H

Peak-White-Inversion Camera



5 ~ 50 mm Lens - Night



(Black & White Model also available)

MODEL	E-63V5H
Sensor	1/3" Colour CCD
Pixel Format	795 (H) X 596 (V)
Resolution	470 TVL 580 TVL (With DSP Enhance)
Min. Illum. (Std. Operation)	0.8 Lux @ F1.2
(Starlight Mode)	0.008 Lux @ F1.2
IR Compatible	No (E-13V5H is)
Gain Control	AGC On/Off (0 ~ 18 dB)
White Balance Mode	ATW / AWC / FIX (Zero colour rolling)
S/N Ratio	52 dB (Min.), 60 dB (Typ with AGC OFF)
Auto Iris	A.E.S. / Video Drive / DC Drive
Automatic Shutter Mode	1/50 ~ 1/100,000 sec. (PAL)
Video Output	1.0 V p-p composite video at 75 ohm
RS-232C Interface	Mini-Din Connector
Operating Temp.	-20° C ~ +50° C
Voltage & Current	12 VDC; 250mA or 24 VAC; 125 mA
Dimensions (mm)	50.5 (W) X 50.5 (H) X 115 (L)

E-ULTRA-4000B

Ultra Wide Dynamic Colour CS Mount Camera



Bright Background



MODEL	E-ULTRA-4000B
Sensor	1/3" PIXIM CMOS Sensor
Resolution	540 TV Lines
Min. Illumination	0.8 Lux (F1.4) 0.1 Lux (slow shutter mode)
S/N Ratio	52 dB or Greater
Dynamic Range	101 dB (typ) 120 dB (max)
Auto Iris	Video or DC Iris
Slow Shutter Mode	Yes
B/W Fixed Mode	Yes
On-Screen-Display Menu	5-Button Control
White Balance	Auto-Tracing, Manual or Preset
Dynamic Range	95 dB
Video Output	Composite Video 1 Vp-p 75 Ohm (NTSC/PAL switchable)
Voltage & Current	12 VDC; 300 mA
Operating Temp	-10 ~ +65 °C
Dimensions (mm)	67 (W) x 62 (H) x 134 (L)

* Individual Pixel Sampling

E-340DN

Day/Night CS Mount Camera



MODEL	E-340DN
Sensor	1/3" Sony Ex-View
Lens	C/CS Mount
Auto Iris	Video or DC Drive Lenses
Resolution	520 TVL (Horiz)
S/N Ratio	48 dB or Greater
Min. Illumination	0.01 Lux (B/W mode) F1.0 Lens
Day/Night Switching	Selectable IR-Cut Filter (850nm)
Day/Night Switch Over Level	10 Lux
IR Compatibility	850 / 880 nm IR Illuminators
AGC	High/Low Selectable
Video Output	1 V p-p 75 ohm (PAL)
Operating Temp	-10° C ~ +50° C
Voltage & Current	12 VDC; 200 mA
Dimensions (mm)	106 x 60 x 49

E-301D

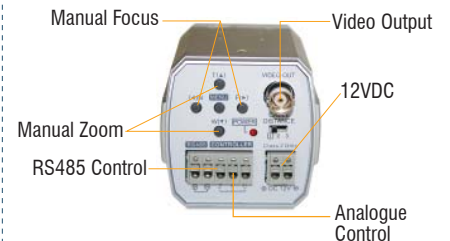
Low Cost B/W CS Mount Camera Body



MODEL	E-301D
Sensor	1/3" B/W Samsung CCD
Resolution	380 TVL
Min. Illumination	0.25 lux (F1.4); 0.125 lux (F1.0)
S/N Ratio	48 dB (AGC off)
Voltage & Current	12 VDC; 160 mA
Weight	360 g
Dimensions (mm)	108 (L) x 62 (W) x 50 (H)

E-AP803

Day/Night Camera with 30x Zoom Lens



MODEL	E-AP803
Sensor	Sony 1/4" Interline Transfer Super HAD CCD
Optical Zoom Lens	3.3 ~ 99 mm
Lens Aperture	F1.6 (W) ~ F3.2 (T)
Zoom Ratio	300x (30x optical; 10x digital)
Zoom Speed	1~3 sec (Configurable)
Zoom Range	Min & Max Range Settable
Focus Range	0.7m ~ (tele) 0.01metre (wide)
Focus Setting	Automatic or Manual
Control Signal	Pelco-D RS485 or analog ±12 VDC
Voltage & Current	12 VDC; 380 mA
Dimensions (mm)	70 (H) x 60 (W) x 130 (L)

E-13VG2812AS-II

Aspherical 2.8~12 mm Auto-Iris Lens



MODEL		E-13VG2812AS-II	
Format	1/3" CS Mount		
Focal Length	2.8 ~ 12 mm		
Iris Range	F1.4 - 360		
Viewing Angle	- Wide	97.4°	
	- Tele	24.1°	
Video/DC Iris	DC		
Dimensions (mm)	40 (Diam) x 53 (L)		

E-13VG308AS

Aspherical 3~8 mm Auto Iris Lens



MODEL		E-13VG308AS	
Format	1/3" CS Mount		
Focal Length	3 ~ 8 mm		
Iris Range	F1.0 - 360		
Viewing Angle	- Wide	91°	
	- Tele	36°	
Video/DC Iris	DC		
Operating Temp.	-20° C ~ +60° C		
Weight	38.4 g		
Dimensions (mm)	33 (W) x 47 (H)		

E-1634

1.6 to 3.4 mm Auto-Iris Fish-Eye Lens



MODEL		E-1634	
Format	1/3" or 1/4" CS Mount		
Focal Length (mm)	1.6 ~ 3.4		
Iris Range	F1.4 ~ R360		
Horiz Viewing Angle (1/3" CCD)	172.2 ~ 77.8°		
Horiz Viewing Angle (1/4" CCD)	126.2 ~ 58.1°		
Video/DC Iris	DC		
Dimensions (mm)	40 (Diam) x 52 (L)		

E-13VG550-II

Aspherical 5~50 mm Auto-Iris Lens



MODEL		E-13VG550-II	
Format	1/3" CS Mount		
Focal Length	5 ~ 50 mm		
Iris Range	F1.4 - 360		
Viewing Angle	- Wide	53.5°	
	- Tele	5.6°	
Video/DC Iris	DC		
Dimensions (mm)	40 (Diam) x 59.2 (L)		

E-13VG20100AS

Aspherical 20~100 mm Auto Iris Lens



MODEL		E-13VG20100AS	E-13VM20100AS
Format	1/3" CS Mount	1/3" CS Mount	
Focal Length	20 ~ 100 mm	20 ~ 100 mm	
Iris Range	F1.6~360	F1.6~360	
Auto Iris	DC Drive (AI model)	Manual	
Viewing Angle H x V	- Wide	13.6° x 10.2°	
	- Tele	2.8° x 2.1°	
Operating Temp.	-20° C ~ +60° C	-20° C ~ +60° C	
Weight	156 g	156 g	
Dimensions (mm)	49 (Diam.) x 119 (L)		

E-13VG1040ASIR

Infra-red compatible 10~40 mm Auto Iris Lens



MODEL		E-13VG1040ASIR	
Format	1/3" CS Mount		
Focal Length	10 ~ 40 mm		
Iris Range	F1.4 - 360		
Iris	Auto (DC)		
Viewing Angle	- Wide	27.5°	
	- Tele	7°	
Weight	87 g		
Dimensions (mm)	67 (W) x 38.7 (H)		

BOARD LENSES

Fixed Focal Length Board Lenses - for cameras with Board Mount Lens fittings (not suitable for cameras with Pinhole Lenses)



E-B250 25 mm Lens



E-B2162



E-B178 - Fish-eye Lens

MODEL	E-B178	E-B2162	E-B2525	E-B3020	E-B4318
Focal Length	1.78 mm	2.1 mm	2.45 mm	2.97 mm	4.3 mm
Aperture	F3	F2.0	F2.5	F2.0	F1.8
1/3" Viewing Angle (H)	108°	98°	87°	77°	58°
1/4" Viewing Angle (H)	90°	80°	70°	61°	45°
Dimensions (mm)	31 x 24.3	17 x 18.5	17 x 9	14 x 15	14 X 16.3

MODEL	E-B6022	E-B8020	E-B1220	E-B1620	E-B250
Focal Length	6 mm	8 mm	12 mm	16mm	25mm
Aperture	F2.2	F2.0	F2.0	F2.0	F2.5
1/3" Viewing Angle (H)	43°	33°	22°	17°	11°
1/4" Viewing Angle (H)	33°	25°	17°	13°	8°
Dimensions (mm)	14 x 16	14 x 14	14 x 14	14 x 15.5	25 x 23.5

E-HPV36K0A000

VERSO Compact Plastic Polymer Housing with Sunshield



12 VDC or 24 VAC Power Supply (Optional)

* Excluding bracket

FEATURES	
Flame Retardant V1 (UL94)	
Side Opening Housing	
2x PG11 Removable Cable glands	
Techno-Polymer Plastic Construction	
Impact resistant K10 according EN 50102 Std.	
Weatherproof Rating	IP66 with E-WBJ bracket, IP65 with E-WBOV
Internal Dimensions (mm)	210 (L) x 63 (W) x 63 (H)
External Dimensions (mm)	400 (L) x 134 (W) x 106 (H)

E-HEK

High Quality Plastic Aluminium Housing



Sunshield

E-WBOV
Wall mount bracket (not included)

* Excluding bracket

FEATURES	
Plastic polymer front and back parts Plastic Polymer	
IP66 Weatherproof rating	
Polycarbonate window with scratch-resistant treatment	
Weatherproof Rating	IP66 with E-WBJ bracket, IP65 with E-WBOV
Internal Dimensions (mm)	82 (W) x 62 (H) x 260 (L)
External Dimensions (mm)	125 (W) x 117 (H) x 403 (L)

E-LXNWRCWB

Plastic Polymer Housing for CS Mount Cameras



* Comes Included with Bracket

FEATURES	
Weatherproof Rating	IP65 (6 = Dust Tight, 5 = Protected against water from all directions)
Internal Dimensions (mm)	68 (W) x 68 (H) x 190 (L)
External Dimensions (mm)	163 (W) x 150 (H) x 290 (L)

E-HOV32K2

IP66 Side Opening High Quality Outdoor Aluminium Housing - with Heater



Sunshield

E-WBOV
Wall mount bracket (optional)

* Excluding Bracket

FEATURES	
Weatherproof Rating	IP66 (E-WBJ) IP54 (E-WBOV)
Sunshield Material	Epoxy-Polyster
Body Material	Die-Cast Aluminium
Colour	RAL9002
Heater	Integrated 12 VDC/24 VAC (20 W)
Wiper (E-HOV32K2A100)	Optional (24 VAC, 7 W)
Operating Temp	-10 to 50 °C
Weight	2.1 Kg
Internal Dimensions (mm)	100 (W) x 70 (H)
External Dimensions (mm)	176 (W) x 160 (H) x 514 (L)

E-WBOV

Wall Mount Bracket - Internal Cable



E-WBJ

Wall Mount Bracket



E-WBM4

Ceiling Mount Bracket



E-WBM4

Pole Mount Adapter for Wall Mount Brackets



E-H01/E-BR02

Low Cost Aluminium Housing with bracket



E-H01 Housing

E-BR02 Bracket

MODEL	E-H01
Dimensions (mm) Outdoor	388 x 101 x 110
Dimensions (mm) Internal	330 x 80 x 110

E-SD18X-IN

Indoor Speed Dome



Colour



E-SD18X-IN
Indoor Speed Dome

MODEL	E-SD18X-IN
Lens	18x Optical (4.1~73 mm)
Sensor	1/4" Sony CCD Camera Module
Resolution	480 TVL
S/N Ratio	50 dB
Focus	Auto or Manual
Min. Illumination	0.7 Lux
Day/Night Switching	-
Day/Night Method	-
Video Output	1 V p-p 75 ohm
Pan Speed	0~300°/sec
Pan Angle	360°
Tilt Speed	0~120°/sec
Tilt Angle	90°(180° with auto flip)
Communication Interface	RS485 (2400~19200 Bps Supported)
Comms Protocols Supported	Factory Default, Pelco D, Pelco P, Samsung, Panasonic, Ultrak, Lilin, Kalatel, VCL, Molyrx, Vicon
Presets	128
Alarm Inputs	4 (calls presets # 29, 30, 31, 32)
Voltage & Current	24 VAC; 1.5 A
Weight	2 Kg
Fan & Heater	No
Operating Temp	-10° C ~ 50° C

E-SD26X-OUT

Outdoor Day/Night Speed Dome



Day/Night



E-SD26X-OUT
Outdoor Day/Night
Speed Dome

MODEL	E-SD26X-OUT
Lens	26x Optical (3.5~91 mm)
Aperture	F1.6~3.8
Sensor	1/4" Sony ExView Day/Night CCD Camera Module
Resolution	480 TVL
S/N Ratio	50 dB
Focus	Auto or Manual
Min. Illumination	(B/M mode) 0.01 Lux
Day/Night Switching	B/W @ 10 Lux
Day/Night Method	Mechanical IR-Cut Filter
Video Output	1 V p-p 75 ohm
Pan Speed	0~300°/sec
Pan Angle	360°
Tilt Speed	0~120°/sec
Tilt Angle	90°(180° with auto flip)
Communication Interface	RS485 (2400~19200 Bps Supported)
Comms Protocols Supported	Factory Default, Pelco D, Pelco P, Samsung, Panasonic, Ultrak, Lilin, Kalatel, VCL, Molyrx, Vicon
Presets	128
Alarm Inputs	4 (calls presets # 29, 30, 31, 32)
Voltage & Current	24 VAC; 1.5 A
Weight	4 Kg
Fan & Heater	Yes
Operating Temp	-10° C ~ 50° C

E-HAMMER-HEAD-II

Day / Night PTZ Colour Camera with IR Illuminator



Day/Night



MODEL	E-HAMMER-HEAD-II
Lens	18x Optical (4.1~73 mm)
Wiper	Integrated
Sensor	1/4" Sony CCD Camera Module
Resolution	480 TVL
S/N Ratio	50 dB
Min. Illumination	0.01 Lux (0 Lux with IR illumination on)
Day/Night Switching	B/W @ 10 Lux
Day/Night Method	Mechanical IR-Cut Filter
IR Illumination	850 nm (60m Range)
Video Output	1 V p-p 75 Ohm
Pan Speed	0 ~ 80 °/sec
Pan Angle	360 °
Tilt Speed	0~40 °/sec
Tilt Angle	+90 °, -90 °
Communication Interface	RS485 (2400 ~ 19200 Bps Supported)
Protocols Supported	Factory Default, Pelco D, Pelco P, Samsung, Panasonic, Ultrak, Lilin, Kalatel, VCL, Molyrx
Presets	128
Weatherproof Rating	IP66
Voltage & Current	10.5 ~ 18 VDC; 3.5 A (DC Model) 24 VAC; 1.75 A (VAC model)
Max. Power Consumption	3.5 A @ 12 VDC, 1.75 A @ 24 VAC
Operating Temp.	-45 ° C ~ +55 ° C
Weight	4 Kg

E-DCJ

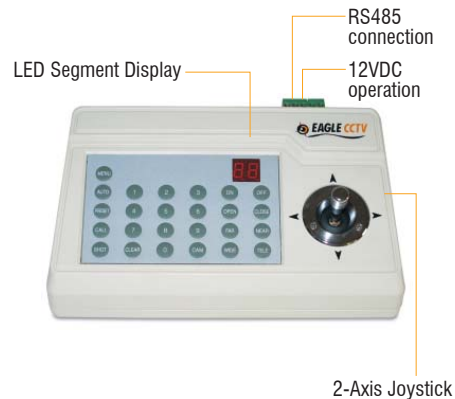
PTZ Speed Dome Camera Control Keyboard with Joystick



MODEL	E-DCJ
Joystick	3-Axis joystick (Pan/Tilt/Zoom)
Telemetry Lines	2x Independent RS485 comms lines (2 x RJ-11)
Telemetry Line Max Distance	1200 Metres
Matrix Line	1 x RS485 (RJ-11)
User Access	3 different password levels
Devices	Up to 999 PTZ drivers / Speed Domes
Supported PTZ Cameras	E-DTRX3, E-PTZ-DRV, E-SD Series, E-HAMMER-HEAD-II
Keyboard Setup	Via 20x4 back-lit display
Power (PSU included)	12 VDC @ 1 A (2.1 mm DC socket)
Dimensions (mm)	298 x 107 x 210

E-KB01

Mini Joystick Controller



MODEL	E-KB01
Communication Interface	RS485
Supported Protocols	SAMSUNG, PELCO-D, PELCO-P/4800 bps & PELCO-P/9600 bps
Baud Rate Supported	2400/4800/9600/19200 bps
No. of PTZ Cameras Supported	1-32
Display	2 Character LED
Camera Controls	Up/Down/Left/Right/Tele/Wide Zoom, Focus, Iris, Auto Iris, Auto Pan, Presets, Patrol
Power	12 VDC @ 500 mA
Weight	0.5 Kg
Dimensions (mm)	188 x 97 x 70

Speed Dome Camera Accessories



E-SD-CM-OUT
Corner Mount Adaptor



E-SD-PM-OUT
Pole Mount Adaptor



E-SD26X-OUT with E-SD-WB-OUT
Wall Mount Bracket



E-SD-PB-OUT
Pendant Mount Adaptor



E-SD-MIRROR-OUT
Mirrored Dome Cover



E-SD-MIRROR-IN
Mirrored Dome Cover



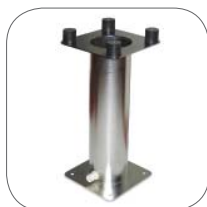
E-SD-RM-IN
Recess mount bracket for E-SD18X-IN



E-HH-WB
Wall Mount Bracket for E-HAMMER-HEAD-II



E-HH-PA
Pole Mount Bracket for E-HAMMER-HEAD-II



E-HH-PB
Pedestal Mount Bracket for E-HAMMER-HEAD-II



E-RS001
RS232 to RS485 Converter



E-RS008
1-In, 8-Out RS485 Distribution Amplifier (Suitable for Star-Config PTZ Camera Setups)

E-IR SERIES

Infra-red LED Illuminators



MODEL	E-IR21-25-880
Viewing Angle	25°
Illumination Range (Max)	15 Metres
Wavelength	880 nm
Input Voltage Range	12 VDC
Power Consumption	200 mA
Indoor or Outdoor	Outdoor
Weight	150 g
Dimensions (mm)	75 x 35 x 30

25°, 15 Metre Max Range



MODEL	E-IR84-30-880
Viewing Angle	30°
Illumination Range (Max)	35 Metres
Wavelength	880 nm
Input Voltage Range	12 VDC
Power Consumption	100 mA
Indoor or Outdoor	Outdoor
Weight	900 g
Dimensions (mm)	90 (Diam) x 90 (L)

30°, 35 Metre Max Range



MODEL	E-IR98-60-880C
Viewing Angle	60°
Illumination Range (Max)	25 Metres
Wavelength	880 nm
Input Voltage Range	12 VDC
Power Consumption	1.1A
Indoor or Outdoor	Outdoor
Weight	750 g
Dimensions (mm)	110 x 100 x 55

60°, 25 Metre Max Range



MODEL	E-IR294-20-880
Viewing Angle	20°
Illumination Range (Max)	75 Metres
Wavelength	880 nm
Input Voltage Range	12 VDC
Power Consumption	3500 mA
Indoor or Outdoor	Outdoor
Weight	1.5 Kg
Dimensions (mm)	133 x 65 x 205

20°, 75 Metre Max Range

E-IR576

Long Range Wide Angle Infra-Red LED Illuminator



MODEL	E-IR576
IR Range (Max.)	350 Metres (880 nm model) 250 Metres (940 nm model)
IR Angle	18°
Wavelength	880 nm or 940 nm (model dependant)
Operating Temp	-30° C ~ +40° C
Power Consumption	24 VDC @ 3.8 A (880 nm model) 12 VDC @ 7.5 A (940 nm Model)
Weight	6.8 Kg
Dimensions (mm)	380 x 320 x 40
Weatherproof Rating	IP66



Invisible

MODEL	E-IR-PLATE-940
Viewing Angle	160°
Illumination Range	3 metres
Wavelength	940nm
Input Voltage Range	12 VDC
Power Consumption	400 mA
Indoor and Outdoor	Indoor
Weight	100g
Dimensions (mm)	106 (L) x 72 (W) x 6 (H)

E-LL801-AB

1 Channel Video to Fibre Optic Transmitter



MODEL	E-LL801-AB
Video Input	1 x Composite Video 1 V p-p 75 ohm (BNC)
Fibre Output	850 nm Multi-Mode
Fibre Connector	ST
Range	up to 3.5 km
S/N Ratio	60 dB
Bandwidth	100 Hz to 10 MHz
Power	12 VDC
Power Consumption	81 mA (max)
Operating Temp	0° C to 45° C
Weight	0.7 Kg
Dimensions (mm)	15 (D) x 45 (H) x 30 (W)

E-LL802-ABA

1 Channel Video to Fibre Optic Receiver



MODEL	E-LL802-ABA
Video Output	1 x Composite Video 1 V p-p 75 ohm (BNC)
Fibre	1 x 850 nm Multi-Mode
Fibre Connector	ST
Bandwidth	100 Hz to 10 MHz
Compatible Video Transmitters	E-LL801-AB, E-LL803T-ABA, E-LL803T-AB
Power	230 VAC
Weight	300g
Dimensions (mm)	101 (L) x 115 (W) x 48 (H)

* Other Fibre Equipment Available on Request

E-TPT-414

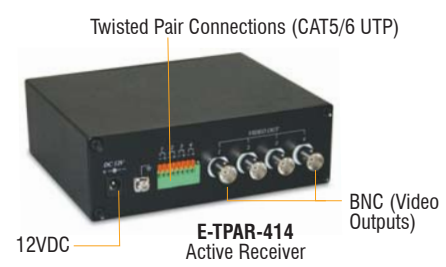
4 Channel Twisted Pair Video Transceiver



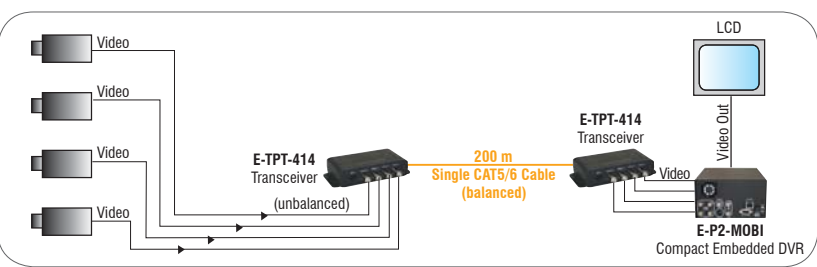
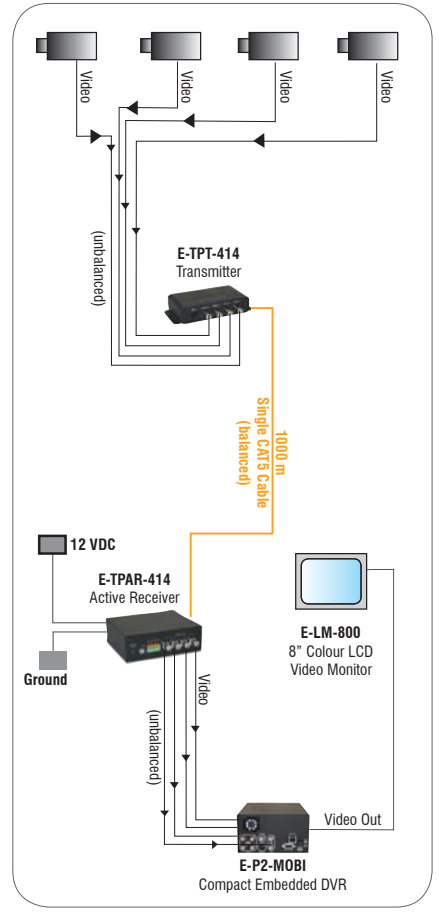
FEATURES	
Video Input	4 x BNC (1 V p-p 75 ohm)
Twisted Pair Output	1 x RJ45 Socket
Transmission Range	200m if 2nd E-TPT-414 used or 1000m if E-TPAR-414 used
Power	Passive - No Power Needed
Dimensions (mm)	138 x 66 x 28

E-TPAR-414

4 Channel Twisted Pair Active Video Receiver

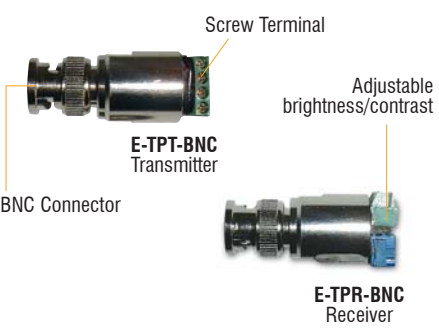


FEATURES	
Video Output	4 x BNC (1 V p-p 75 ohm)
Twisted Pair	1 x RJ45 Socket
Adjustments Input	Adjustable Gain & Contrast (balanced)
Distance Adjustment	5 position dip-switch
Transmission Range	1000 Metres (Colour) 1500 Metres (B/W)
Power	12 VDC @ 300 mA
Dimensions (mm)	138 x 66 x 28



E-TPT-BNC / E-TPR-BNC

Low Cost Twisted Pair Video Converter Kit



MODEL	E-TPT-BNC/E-TPR-BNC
Max. Transmission	1000 m
Mounting Location	BNC camera connector
Transmission signal	Twisted pair symmetric 2 x 2 V pp no-load voltage
Video input signal (E-TPT-BNC)	1 V pp / 75 ohm
Video output signal (E-TPR-BNC)	1 V pp / 75 ohm
Frequency response	+0 / -0.5 dB (5MHz)
Source Impedance	120 ohm (with p/2Y cable)
Video input signal	1 V pp / 75 ohm
75 ohm termination	Yes
Operating voltage	12 VDC @ 0.3 W (E-TPT-BNC) or 12 VDC @ 0.5 W (E-TPR-BNC)
Compatible Cable	CAT5/CAT6 UTP
Weight	30 g (E-TPR-BNC) 40 g (E-TPT-BNC)
Dimensions (mm)	47 (L) x 18 (D)

E-USB-CAT5

USB to UTP CAT5 Converter



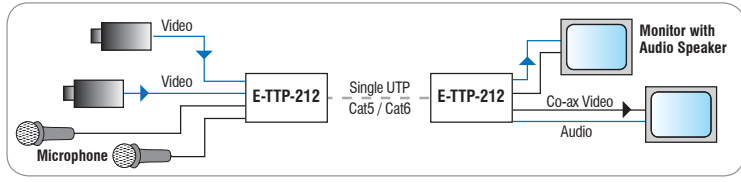
MODEL	E-USB-CAT5
USB Compliant	1.1
USB Transmitter Side	Four USB Ports
USB Receiver Side	1 USB Slave Connector
Power	USB Powered
Maximum Range	50 metres

E-TTP-212

Audio / Video Twisted Pair (CAT5/6 UTP) Transceiver Unit



MODEL	E-TTP-212
Video Input (when used as a transmitter)	Two Composite Video (RCA)
Video Output (when used as a receiver)	Two Composite Video (RCA)
Audio Input (when used as a transmitter)	Two 2Vp-p (RCA)
Video Output (when used as a receiver)	Two 2Vp-p (RCA)
RJ45 Connector	One Twisted Pair Unbalanced Input or Output
Max Range	300 Metres
Power	Passive Operation
Dimensions (W x H x D)	108 x 72 x 27 mm



Configuration #1. Other application is a bi-directional video/audio intercom.

E-LM-500

5" TFT LCD Monitor, Video Input

Video Audio



MODEL	E-LM-500
Display	5" TFT LCD
Display Resolution	960 x 234
Screen Size	102.7 x 74.9 mm
Brightness	150 cd/m ²
Interface	NTSC / PAL Video
Audio Speakers	Built-In
Power Supply	12 VDC (±10%)
Power Consumption	6 W
Operating Temperature	0° C ~ 60° C
Housing	Plastic
Weight	286 g
Dimensions (mm)	112 (W) x 162 (H) x 15 (D)

E-LM-800

8" Colour LCD Monitor

Video VGA Audio



MODEL	E-LM-800
Screen Size	8" Diagonal
Image Format	4:3 (640 x 480)
Horiz. Resolution	460 TVL
Viewing Angle	160 (80 up / 80 down)
Brightness	300 cd/m ²
Audio Speakers	Integrated Dual 4,3 cm Speakers
Headphone Socket	3.5 mm socket
Menu	On-Screen-Display Menu
Display Settings	Sharpness, Brightness, Saturation, Contrast Ratio, Volume
Power	12 VDC 10 W
Dimensions (mm)	212 x 213 x 33

E-17W01

17" LCD Monitor

Video
VGA
S-Video
Audio



MODEL	E-17W01
LCD Display Panel	17" TFT LCD
Resolution	500 TVL (1280x1024 SXGA mode)
LCD Display Colour	16.7 M colours
Pixel Pitch	0.264 (H) x 0.264 (V) mm
Viewing Angle	85° / 85° (L/R) 85° / 85° (U/D)
Contrast Ratio	500:1
Brightness	250 cd/m ²
Back Light	4 CCFLs, 50 000 Hrs Life Span
Response Time tr/ff	10~15ms
Video Interface	Video NTSC / PAL auto switching (BNC in/out), S-Video (Y/C in/out), VGA (DB15)
Audio	Speaker x 1 (RCA in/out)
Power Input	12VDC / 4.0 A
Power Consumption	50W Max.
Mounting	VESA Standard
Dimensions (mm)	375 (W) x 370 (H) x 170 (D)

E-19W01

19" LCD Monitor

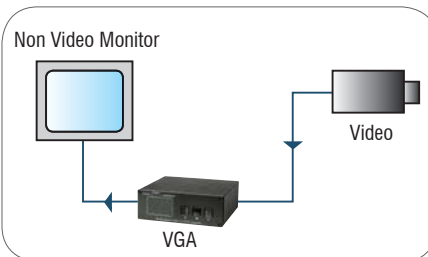
Video
VGA
S-Video
Audio



MODEL	E-19W01
LCD Display Panel	19" TFT LCD
Resolution	460 TVL (Video) 1280 x 1024 (VGA)
LCD Display Colour	16.7 M colours
Pixel Pitch	0.297 (h) x 0.294 (v) mm
Viewing Angle	170° (H + V)
Contrast Ratio	500:1
Brightness	250 cd/m ²
Back Light	50 000 Hrs Life Span
Response Time tr/ff	5/10 ms
Video Interface	Video NTSC / PAL auto switching (BNC in/out), S-Video (Y/C in/out), VGA (DB15)
Audio	Speaker x 1 (RCA in/out)
Power Source	12VDC; 3A
Power Consumption	50 W Max.
Mounting	VESA Standard
Dimensions (mm)	421 x 405 x 170 mm w/base

E-VIDEO-VGA1

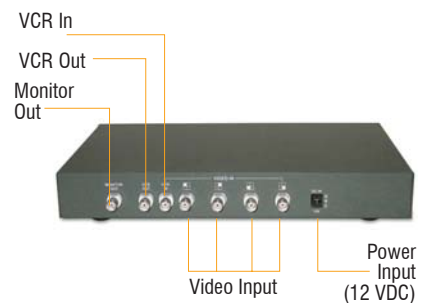
Composite Video to VGA Converter



MODEL	E-VIDEO-VGA1
Input	1 x Composite Video (RCA) or S-Video (Mini-Din)
Video Standard Supported	PAL or NTSC
Output	VGA 0.7Vp~p RGB Signal (DB15 Fem)
VGA Resolution	800x600, 1024x768, 1280x1024 @ 60Hz
Frequency Output	60Hz, 70Hz, 75Hz, 85Hz
Menu	On Screen Display (OSD) menu
Functions	Adjustable Brightness, Contrast, Hue & Sharpness
Power	5 VDC @ 1.2A
Dimensions (mm)	132(w) x 133(h) x 44(d)

E-705

Quad Processor



MODEL	E-705
Colour or Monochrome	Colour
Video Inputs	4 Composite Video Inputs (75 ohm 1 V p-p)
Video Standard	PAL or NTSC
Video Resolution	762 (H) x 576 (V) (PAL)
Display Mode	Full Screen, Quad & Auto Switching
Video Outputs	2 Video Outputs (75 ohm 1 V p-p) (1 x Monitor Out, 1 x VCR Out)
On-Screen-Display Menu	OSD
Motion Detection	Software Enabled Via OSD
Operation	12 VDC @ 400 mA
Dimensions (mm)	312 (W) x 200 (D) x 42 (H)

E-P2-MOBI

Compact Embedded 4ch DVR

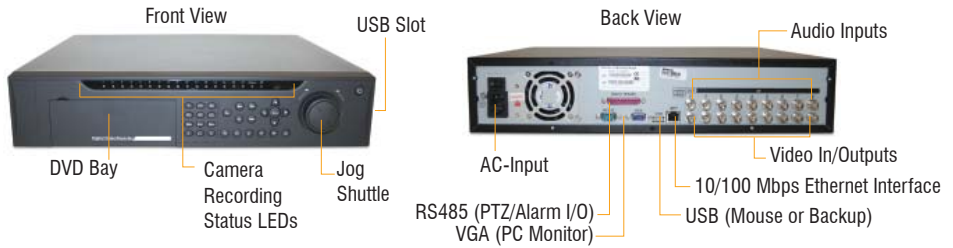
MJPEG Audio Motion



E-DVR-1604 / E-DVR-804HB

Hi-Res Real-Time Embedded 8 & 16 ch Video & Audio Recorders

MPEG-4 Audio Motion RS485



MODEL	E-P2-MOBI
Video Inputs	4 Composite Video (BNC)
Outputs	1 x Video (BNC) or 1 x S-Video (Mini-Din)
Monitoring Speed	25 fps per ch
Recording Speed	25 fps per ch
Recording Image Format	360 x 240
Recording Resolution	320 Horiz TVL
Recorded Image Size	Very High (25~30Kb) High (15~20Kb) Standard
Video Compression	MJPEG
Audio	1 x Audio Input (BNC) & 1 x Audio Output (BNC)
Alarm Inputs	4
Alarm Outputs	1 Relay
RS232 Interface	1 x DB9
Ethernet Interface	10/100 Mbps
HDD Storage	3.5" Removable IDE
Removable Storage	Compact Flash Socket
Power	12~30VDC 12VDC @ 4~5A

MODEL	E-DVR-1604	E-DVR-804HB
Video Channels	16 x composite video inputs, 75 Ohm 1 Vp~p (BNC)	8 x composite video inputs, 75 Ohm 1 Vp~p (BNC)
Video Standard	NTSC or PAL	NTSC or PAL
Video Monitoring Speed	25 fps per channel	25 fps per channel
Video Recording Speed	25 fps per channel (D1 - 720x576) or 400 fps (CIF - 352x288) or 6fps (01 - 720 x 576)	25 fps per channel (adj. btw 1~25 fps) 200 fps total
Video Compression	MPEG-4 / H.264	MPEG-4 / H.264
Image Quality	6 levels	6 levels
Monitor Outputs	1 x video output (BNC) or 1 x PC monitor (VGA)	1 x video output (BNC) or 1 x PC monitor (VGA)
Audio Channels	16 x audio in (BNC)	16 x audio in (BNC)
OS	Embedded Linux RTOS	Embedded Linux RTOS
Alarm Inputs	16 x alarms (+5 to +15 VDC)	8 x alarms (+5 to +15 VDC)
Alarm Outputs	6 x relays (30 VDC 1A)	3 x relays (30 VDC 1A)
HDD Storage	6 x 3.5" HDD, 1 x 5.25" (4 x IDE ports)	6 x 3.5" HDD, 1 x 5.25" (4 x IDE ports)
Network	10/100 Mbps Ethernet (RJ45)	10/100 Mbps ethernet (RJ45)
PTZ Control	1 x RS485	1 x RS485
Remote Terminal/Keyboard	1 x RS232	1 x RS232
Power	115 ~ 230 VAC (40 W)	115 ~ 230 VAC (40 W)
Rack Mountable	Yes (2U)	Yes (2U)
Dimension (mm)	441 (W) x 460 (L) x 89 (H)	441 (W) x 460 (L) x 89 (H)

E-761

4Ch MPEG-4 Embedded Video & Audio Recorder

MPEG-4 Audio Motion



MODEL	E-761
Video Standard	PAL or NTSC (switchable)
Video Input	4 BNC (composite video 1Vp~p 75ohm)
Video Output	2 BNC (1 x Main Monitor, 1 x Call Monitor Out)
Video Looping	Yes (4 BNC)
Max Recording Speed (Total)	25fps (720x576) or 100fps (352x288)
Recording Speed Settings (720x576 mode)	25/12/6/3fps
Recording Speed Settings (352x288 mode)	100/50/25/12fps
Recording Mode	Manual/Timer/Motion/Alarm
Audio Input	1 audio input & 1 audio output
Motion Detection	16x12 grids (per camera)
Pre-Alarm Recording	Yes
Time/Date	Yes
Video Loss Detection	Yes
Recording Compression	MPEG-4
HDD Support	IDE ATA66. HDDs upto 400GB
Ethernet Interface	10/100 Base-T
Video Server	Integrated
Dimensions	345mm (W) x 68.3mm (H) x 225mm (D)
Power	19VDC 42W (AC-inpu PSU included)

E-M8DVR

Compact DVR with 30GB HDD & Motion Detection

MPEG-4 Audio Motion

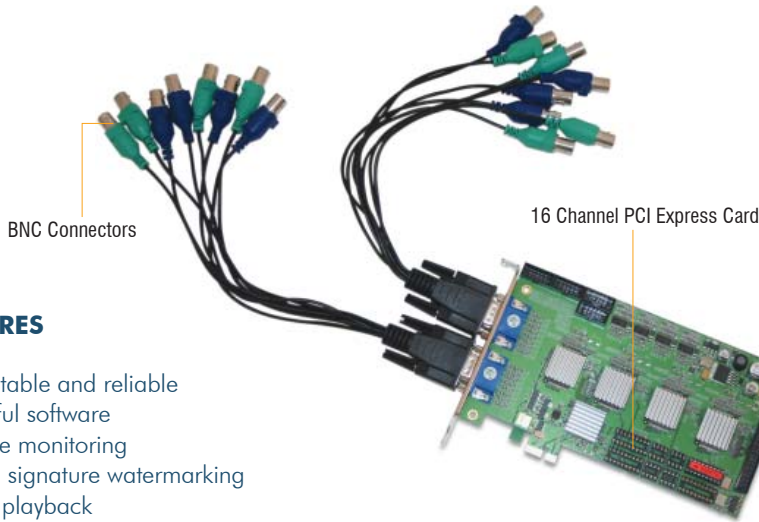
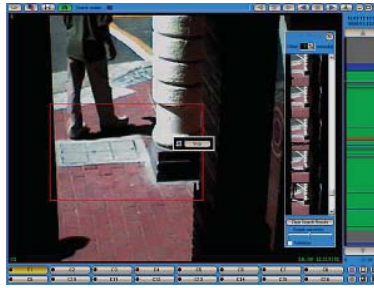


MODEL	E-M8DVR
Video Input	1 x Composite Video (PAL/NTSC selectable)
Video Recording Format	640 x 544
Video Recording Speed	15~18 fps (depends on amount of motion)
Video Resolution (After Compression)	220 TVL
Video Compression	MPEG-4
Storage Type	Internal HDD or SD slot (Up to 4GB SD Supported)
Recording Time (Internal 30GB HDD)	±25 Hours (continuous), ±40 Hours (motion)
Recording Time (1GB SD)	±60 minutes
Motion Detection	Yes (Internal Software)
Audio Input	1 x Audio Input (44100Hz Mono)
Audio/Video Output	Yes
LCD Display	3.5" TFT
LCD Power-Off (Programmable)	Always on/30sec/1min/3min
Time/Date	Yes
Counter	Yes (for evidence purposes)
PC Interface	USB 2.0
Camera Power Output	5 VDC @ 500 mA max
Compatible Cameras	E-HEADCAM, E-TAC-CAM
Battery	3.7 VDC 2A Li-Ion (±120minutes battery life)
External Power/Battery Charger	5 VDC @ 1A
Weight	52 g
Dimensions (mm)	80 x 52 x 22.3

* E-VGA2: Optional Video to VGA Converter

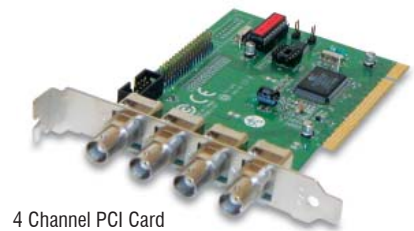
EAGLE-DVR

EagleDVR Digital Video Recording Cards



BNC Connectors

16 Channel PCI Express Card



4 Channel PCI Card

FEATURES

- * Ultra stable and reliable
- * Powerful software
- * Remote monitoring
- * Digital signature watermarking
- * Visual playback
- * Smart motion object search
- * Free client and multiclient
- * Secure proprietary recording
- * PCI or PCI Express

SPECIFICATIONS

MODEL	E-EAGLE-DVR-1/2/4	E-EAGLE-DVR-II-4/8/16
Number of Channels	1, 2 or 4 (model dependent)	4, 8 or 16 (model dependent)
Hardware	25fps PCI Card with BNC connectors	100fps PCIe Card with BNC cable connectors
Max Number of PCI Cards Per PC	4 (Max 16 channels per PC)	2 x 4ch (8ch Realtime) or 2 x 8ch (16Ch half Realtime)
Software	User friendly "Drag & Drop" software	
Image formats	384 x 288, 768 x 288, 768 x 576	
Horiz. Recording Resolution (384 x 288)	250 TVL	
Horiz. Recording Resolution (768 x 288)	320 TVL	
Horiz. Recording Resolution (768 x 576)	520 TVL	
Dynamic Frame Rate Recording	Yes (fps allocated to 'motion' cameras)	
Audio Recording	Single Channel Audio Recording via Sound Card Line-in	
Recording Activation	Advanced motion detection with adjustable sensitivity, masks and deactivation delay	
Notification	Email with image for system events (system or camera failure, motion, etc)	
Multi-Camera playback	Yes (Upto 16 Simultaneously)	
Archiving	Automatic backup feature with network support	
Playback Search	Time/date or Enhanced "smart motion search" with thumbnails	
Post Record Picture enhancement	Digital Zoom, Sharpness & Brightness	
Advanced Remote Connectivity via TCP/IP	Playback & Live Monitoring	
Watermarking	Encrypted Digital Signature	
Audit log	Audit log of user actions and events Actions	

ORDERING INFORMATION

MODEL	DESCRIPTION
E-EAGLE-DVR-1	25 fps 1ch DVR card
E-EAGLE-DVR-2	25 fps 2ch DVR card
E-EAGLE-DVR-4	25 fps 4ch DVR card
E-EAGLE-DVR-II-4	100 fps 4ch DVR card
E-EAGLE-DVR-II-8	100 fps 8ch DVR card
E-EAGLE-DVR-II-16	100 fps 16ch DVR card

E-IP7131

Entry Level IP CMOS Camera

MPEG-4 **Audio** **POE**



C Mount Lens Attachment

MODEL	E-IP7131
Sensor	1/4" VGA Format CMOS
Lens	CS Mount Manual Iris
Max. Resolution	640 x 480
Max. Frame Rate	30 fps @ 640 x 480
Min Illumination	1 Lux (F2.0)
Compression	MPEG-4 (Hardware)
Motion Detection	3 Zone Motion Detection
Audio Microphone	Integrated
Alarm Input	1 x Alarm in
Alarm Output	1 x Relay Out
POE Support	Yes
External Power	12 VDC
Dimensions (mm)	162.38 (l) x 96.16 (w) x 47.44 (h)

E-IP6122

Day/Night CS Mount IP Camera

MJPEG **MPEG-4** **Audio**



CS Mount
Lens Attachment

Auto Iris Lens Support

MODEL	E-IP6122
Sensor	1/3" 480 TVL, Sony Interfaced CCD
Max. Resolution	704 x 576
Max. Frame Rate	12 fps @ 704 x 576, 25 fps @ 352 x 288
Lens	C/CS Auto Iris or Manual Iris Lenses
Min. Illumination	0.5 Lux (F2.0)
Compression	MJPEG OR MPEG4
Motion Detection	3 Zone Motion Detect
Video Output	1 x Video Loop Through
Audio	Bi-Directional with Audio Output
Microphone	Yes
Alarm Input	1 x Alarm In
Alarm Output	1 x Relay Out
Compatible Housing	E-E-HOV32K2, E-HEG or E-HPV42K2A016
Protocols	TCP/IP, HTTP, SMTP, FTP, DDNS, UPnP, Telnet, NTP, DNS and DHCP
Camera Power	12 VDC @ 1.5 A
Dimensions (mm)	140 (L) x 70 (W) x 55 (H)

E-IP7138

Colour 1.3 MegaPixel IP Camera

MJPEG **MPEG-4** **POE**

Audio



MODEL	E-IP7138
Sensor	1/4" 1.3 Megapixel CMOS
Lens	CS Mount Manual Iris
Resolution	320x240, 640x480, 1280 x 1024
Max. Frame Rate	30fps @ 320x240/640x480, 7.5fps @ 800x600/1280x1024
Min Illumination	15 Lux (F2.0) for full frame rate operation
Compression	MPEG-4 & MJPEG
Onboard Storage	CF Card
Motion Detection	3 Zone Motion Detection
Audio Microphone	Integrated
Alarm Input	1 x Alarm in
Alarm Output	1 x Relay Out
POE Support	Yes
External Power	12 VDC
SDK Available	Yes
Dimensions (mm)	126 (l) x 96 (w) x 47 (h)

E-IP3100

3 Megapixel IP Camera

MJPEG



MODEL	E-IP3100
Sensor	1/2" CMOS
Resolution	1920x1080
Scanning Type	Progressive
Lens Mount	CS or C with adapter ring
Auto Iris Support	DC drive AI lenses
Colour Separation	Bayer Mosaic RGB Filter
Sensitivity	5~10 Lux (Stationary Objects/Scenes), 150~200 Lux (Fast Moving Objects)
Frame Rate	15~20fps @ 1920x1080 (at 200~10000 lux)
Dynamic Range	60dB
Max S/N Ratio	44 dB typically
Compression Type	MJPEG (25 compression levels)
Typical File Size	1920 x 1200 Image (225K)
Ethernet Interface	100 Base-TX Ethernet (max 45Mbps Data Rate)
Power Over Ethernet	Supported (IEEE 802.3af)
Operating Voltage	12 ~ 48VDC
Power Consumption	4W Max
Power Connection	Screw Terminal
Operating Specs	0 to 50°C
Dimensions (mm)	76 (W) x 57 (L) x 64 (H)

E-S2600e

Ultra-Wide Dynamic IP CS Camera

MPEG-4 **POE**



MODEL	E-S2600e
Sensor	1/3" Digital Pixim
Resolution	742(H) x 554(V)
Dynamic Range	102 dB typical/120 dB maximum
Lens Mount	CS Mount
Iris Control	Automatic / Manual
Ethernet Interface	10/100Base-T
Network Connector	RJ-45 Jack
Protocols Transport	RTP/IP, UDP/IP, TCP/IP, or multicast IP, DNS, NTP, HTTP, FTP, and DHCP client
Security	SSL-based Authentication
Analog Output	1 composite, 1 Vpp into 75 ohms (NTSC/PAL) BNC female
Minimum Illumination	0.5 lux (F1.2 40 IRE in colour mode)
Compression	MPEG-4 SP
Frame Rate	1-25 FPS programmable (full motion)
Alarm Input	1 dry contact
Output	1 relay contact
Power	12V DC
Operating Temperature	0°C to 50°C
Weight	0.37 kg
Dimensions (mm)	140(l) x 76(w) x 51(h)

E-IP8360

8 Megapixel 360° IP Dome Camera

MJPEG



MODEL	E-IP8360
Image Sensors	Four 2 Megapixel 1/2" CMOS
Resolution	1600x1530 per sensor
Scanning Type	Progressive Scan
Lens	Four 4mm F2.0 Lenses
Minimum Illumination	5~10 Lux
Data Rate	Upto 55 Mbps
Frame Rate (all ch's in parallel)	88fps at 800x600 or 22fps @ 1600x1200
Compression Type	MJPEG (21 quality levels)
Transmission Protocol	TFTP & HTTP
Communication Interface	100Base-T Ethernet Interface
Power Over Ethernet	Supported (IEEE 802.af)
Operating Voltage	9~12VDC
Power Consumption	6W Max
Dimensions	182.9 (diam) x 154.7mm

E-IP6121-VD

Vandal Proof IP Dome Camera

MJPEG **MPEG-4** **Audio**



MODEL	E-IP6121-VD
Sensor	1/3" 520 TVL Sony CCD
Min Lux	0 Lux (IR Illumination On)
IR Illumination	12 x 850nm IR LEDs
Processor	Trimedia PN1300
Memory	16MB (RAM) 4MB (FLASH ROM)
Supported Protocols	UPnP, TCP/IP, HTTP, SMTP, FTP, Telnet, NTP, DNS, DDNS & DHCP
Compression	Dual Codec (MPEG4 and MJPEG)
Frame Rate	176 x 144 (25fps), 352 x 288 (25fps), 704 x 576 (15fps)
Audio	Bi-Directional, Audio Microphone Input & Audio Speaker Output
Audio Compression	32 Kbps, 24 Kbps, 8 Kbps
Ethernet Interface	10/100Mbps base-T Fast Ethernet
Alarm I/O	1 x Alarm In, 1 x 24VDC 1A Relay Out
Dimensions	137 (diam) x 110 (height) mm
Voltage & Current	12 VDC; 600 mA

E-SD6122VD

Vandal Proof IP Speed Dome Camera

MJPEG **MPEG-4**

Audio



MODEL	E-SD6122VD
Sensor	1/4" Sony 480TVL
Min Lux	1 Lux
Lens	10 x Motorised Optical (4--40mm)
Zoom Speed	3.9 sec
Tilt	180deg
Pan	720deg
Pan Speed	5--300deg/sec
Processor	Trimedia PN1300
Supported Protocols	UPnP, TCP/IP, HTTP, SMTP, FTP, Telnet, NTP, DNS, DDNS & DHCP
Camera Functions	AES, AWB, AGC
Compression	Dual Codec (MPEG4 & MJPEG)
Frame Rate	176x144 (25fps), 352x288 (25fps), 704x480 (15fps)
Audio	Bi-Directional, Audio Microphone Input & Audio Speaker Output
Ethernet Interface	10/100Mbps Base-T Fast Ethernet
Alarm I/O	8 x Alarm-In, 1 x Relay Output
Voltage & Current	12VDC; 2 A
Dimensions (mm)	133 (diam) x 173 (H)

E-IPV7101

1Ch D1 IP Video Server

MJPEG **MPEG-4** **RS485** **POE** **Audio**



MODEL	E-IPV7101
Video Input	1 x BNC Composite Video (PAL or NTSC selectable)
Compression	MPEG-4 or MJPEG (software selectable)
Resolution	176x144, 352x288, 704x576
Frame Rate	Upto 25fps at 704x576
Protocols	TCP/IP, HTTP, UPnP, RTSP/RTP/RTCP, IGMP, SMTP, FTP, DHCP, NTP, DNS, DDNS and PPPoE
Ethernet	10/100Mbps (RJ45)
Alarm Input	1 (Screw Terminal)
Alarm Output	1 (Screw Terminal)
Audio Input	1 (RCA)
Audio Output	1 (RCA)
Serial Port	1 x RS485
PTZ Supported Devices	Sony VISCA, Pelco-D, Ernitec, LiLin, Samsung, DynaDome, SmartDome, Canon VC-C3/C4
Power	12VDC (2.1mm DC socket) - PSU included
POE Support	Yes (802.3af compliant)
Dimensions	137.7 x 78.35 x 33.85 mm

E-IPV2403

4ch IP Video Server

MJPEG

RS485



Front View



Back View

MODEL	E-IPV2403
CPU	Trimedia PN1302
RAM	32MB SDRAM;
ROM	4MB FLASH ROM
Video Input	4 x PAL/NTSC Composite Video
Supported Resolutions	176x144, 352x288, 704x288, 704x576
Frame Rate	(10fps @ 704x576) or (25fps @ 704x288 or 352x288)
Serial Port	1 x RS232 or 1 x RS485 (PTZ Control)
Supported PTZ Devices	Sony VISCA, Canon, Samsung, Dyna-Colour, Pelco-D, LiLin, and Ernitec
Alarm I/O	4 x Inputs (12VDC 50mA) or 4 x Relay Outputs (24VDC 1A)
Compression	MJPEG
Protocol	TCP/IP, HTTP, SMTP, FTP, Telnet, NTP, DNS, DDNS, DHCP, UPnP, PPPoE
Development Support	Via an Active-X Control
Power	12VDC (8W)
Dimensions (mm)	160 (L) x 146 (W) x 40 (H)

E-S1950e

1 Ch High-End IP Video Server

MPEG-4

RS485

Audio



MODEL	E-S1950e
Video Input	1x composite Video (NTSC/PAL Selectable)
Connector	BNC female
Compression	MPEG-4 SP
Resolution Scalable from	176x144 to 704x576 pixels (PAL)
Frame Rate	1-25 FPS programmable (full motion)
Ethernet Interface	10/100Base-T (RJ-45 jack)
Bandwidth Configurable	30 kbps to 6 mbps
Protocols	RTP/IP, UDP/IP, TCP/IP, or multicast IP, DNS, NTP, HTTP, FTP & DHCP client
Alarm Input	1 dry contact
Alarm Output	1 optically isolated relay contact (48V AC/DC at 100 mA max.)
Audio Input (Optional)	-46 to -3 dBV into 30 kOhm (line or microphone input)
Audio Output	-46 to -3 dBV into 16 ohms 1/8 in. (3.5 mm) stereo jacks
Serial Port	RS422/485 2 or 4 wire Configurable
Serial Operating Mode	Transparent supporting any Asynchronous Transfer
Security	SSL-based authentication
Power	12V DC \pm 10% (3.7W)
Dimensions (mm)	106 (L) x 90 (W) x 42 (H)

E-S1708e-T

8 Ch High-End IP Video Server

MPEG-4

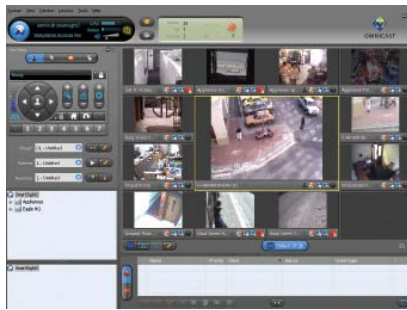
RS485



MODEL	E-S1708e-T
Ethernet Interface	10/100Base-T (RJ-45 jack)
Supported Protocols	RTP/IP, UDP/IP, TCP/IP, or multicast IP, DNS, NTP, HTTP, FTP, and DHCP client
Security	SSL-based authentication
Video Inputs	8 x Composite Video (1 Vpp 75 ohms - NTSC/PAL Selectable)
Codecs	Dual Stream 4CIF, 30 FPS and CIF, 15 FPS programmable
Connectors	BNC female connectors
Compression	MPEG-4 SP
Resolution Scalable from	352 x 288 to 704 x 576 PAL pixels
Frame Rate	8 x 1-25 FPS (PAL) programmable (full motion)
Bandwidth Each stream configurable	30 kbps to 6 mbps
Serial Ports	1 x RS-232 (max. 230 kbps), 1 x RS-422/485 2/4 wires (max. 230 kbps)
Serial Operating Mode	Transparent Supporting Asynchronous Serial protocol
Alarm Input	12 dry contacts
Alarm Output	2 relay contacts (48V AC/DC at 100 mA max.)
Connectors	One set of 3.5 mm input and output stereo jacks
Power	12V DC \pm 10% (20W)
Enclosure	Metal case with flange mount (black color)
Dimension (mm)	431.8(L) x 154.9(W) x 43.2(H)

E-OMNICAST

Omnicast 4.0 IP Video Management & Storage Software



FEATURES

VIDEO

- * Bandwidth managed from 8Kbits/s to 10 Mbits/s per camera
- * Up to 60 fps per camera
- * Resolution from 176 to 120 to multi megapixel
- * IP and Analog camera support

AUDIO

- * Full duplex IP intercom
- * Multiple audio protocols supported

IP TRANSITION

- * Video and audio transported over any IP network
- * IP multicast connectivity over 802.11a/b/g or cellular
- * Remote access via DSL, cable, cellular, ISDN, T1 or T3

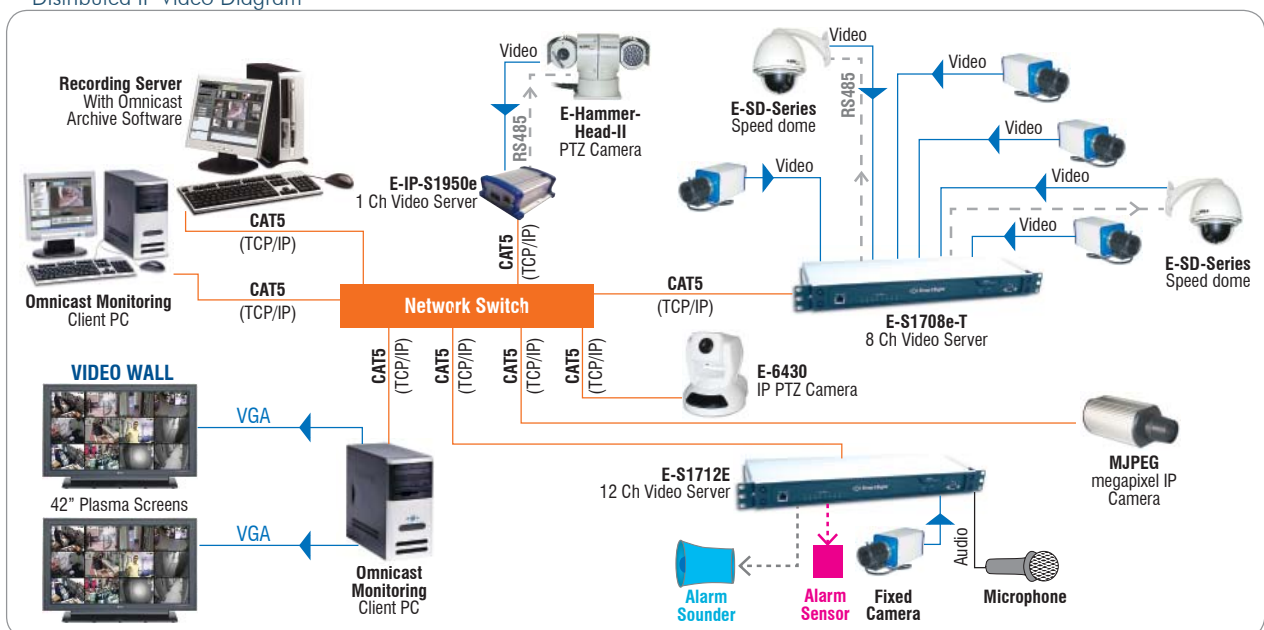
Omnicast 4.0 is the ideal solution for organizations requiring a unified management of security video, audio and data via IP networks. With the introduction of innovations such as the Virtual Matrix, fully fault-tolerant software and city wide surveillance support, Omnicast 4.0 has proven to be the solution of choice for enterprise-class level installations.

Omnicast 4.0 is based on a client-server architecture that enables simultaneous viewing, storage and capture of high quality, high resolutions, video, audio and data services.

As opposed to conventional DVR systems, Omnicast 4.0 does not require coaxial deployment from the cameras to the control rooms. Video and audio are captured right at the camera and transported via the IP network to multiple on- and off-site locations through a secure channel.

Omnicast offers you the freedom of selecting hardware that best suits your needs. Whether you require IP, analog or other camera types, Omnicast 4.0 has the capability of managing all these technologies. This flexibility even enables integration with legacy CCTV equipment, meaning you can leverage your previous investments while upgrading to the latest security technologies.

Distributed IP Video Diagram



E-VLM1

Hand-held Video Level Meter



MODEL	E-VLM1
Input Range	Sync (90mV~1.05V) Peak (300mV~3.5V)
Input Impedance	High Z/75ohm
Power	9 VDC Battery
Dimensions (mm)	118 x 60 x 29

E-FM1

Hand-held Camera Focus Indicator



MODEL	E-FM1
Input	1 V p-p (75 ohm) Video or high impedance (BNC female)
Display	LED Bar Graph
Power	9 VDC (PP3)
Power Consumption	30 mA
Weight	125 g
Dimensions (mm)	118 x 60 x 29

E-TCG1

Hand-held Test Pattern Generator



MODEL	E-TCG1
Output	1 V p-p 75 ohm composite video
Line Frequency	15.625 Hz
Field Frequency	50 Hz Interlaced
Frequency	4.43381875 MHz
Colour System	PAL
Pattern Generated	1. Colour Bars 2. Red Raster 3. Peak White Raster 4. Composite Test Band
Battery	9 VDC Alkaline Battery (PP3)
Power Consumption	50 mA
Weight	96 g (Battery Excluded)
Dimensions (mm)	105 x 60 x 20

E-CCTV-TEST-56

Advanced CCTV Test Monitor



Carry bag



Top View

MODEL	E-CCTV-TEST-56
Video Monitor	5.6" Color TFT (960x234)
Video Input	Composite Video 1V p-p (NTSC or PAL)
Video Termination	On/Off Selectable
VGA Connection	for VGA input (640x480)
Video Level Meter	Yes (On-Screen Overlay)
Pattern Generator	Yes (On Video Output)
Video Connections	Video (RCA), VGA (D-SUB 15)
RS485 Interface	1 for PTZ Camera Control (Screw Terminal)
Battery	Integrated Li-On 2200mAh Rechargeable Battery
Battery Life	4 Hours (max)
External Power	12VDC
Weight	1Kg
Dimensions	185 (W) x 120 (H) x 50 (D) mm

E-R337

Advanced CCTV Test Monitor



MODEL	E-R337
LCD Video Display	2.5" TFT Colour LCD
Video Input	PAL or NTSC, 1Vp-p 75 Ohm (BNC)
Video Output	Vp-p 75 Ohm 140 IRE (PAL or NTSC selectable)
Power Measurement	AC or DC
External Power	12 VDC @ 1A (2.1 mm DC socket)
Battery Power	6 x AA NiM-H (removable)
Battery Life	Approx 4 Hours
Power Fuse Protection	Yes (inside battery compartment)
Weight	390 g
Dimensions (mm)	88 (W) x 190 (L) x 58 (T)

E-LX536

Advanced Hand-Held Light (Lux) Meter



MODEL	E-LX536
LED Display	Yes
Measuring Range	20 / 200 / 2000 / 20000 Lux/Fc
Resolution	0.01 lux
Accuracy	±(3% rdg+5dpts)
Sensor	Silicon Photo Diode
Sensor lead length	150 cm (approx)
Datalogger Records	16000 Data Points
Time Date Clock	Yes
Memory Backup	Via a backup battery
Power	9 VDC Battery operation
Battery lifetime	± 50 Hours
Weight	300 g
Dimensions (mm)	146 x 70 x 39 (Main instrument); 100 x 60 x 27 (Sensor probe)

E-C3214

Co-Ax Tool Kit



APPLICATIONS	
Kit Includes	1 x Coax Crimping Tool, Coax Stripper & Cable Cutter
Compatible Cable	RG59 / RG58 / RG62 / RG6 / Power-Ax
Dimensions (mm)	260 (L) x 200 (W) x 48 (H) mm

E-RJ-KIT

RJ / CAT5



MODEL	E-RJ-KIT
Kit Includes	1 x RJ Crimping Tool, Cable Stripping Tool, Cable Tester, 60pcs RJ Connectors
Compatible Connectors	RJ11/RJ12/RJ45
Compatible Cable	UTP (CAT5 / CAT6)
Dimensions	297 (L) x 197 (W) x 48 (H) mm

E-LSM-713

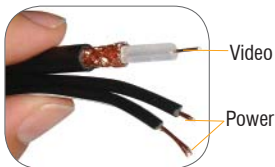
7" LCD Test Monitor with battery



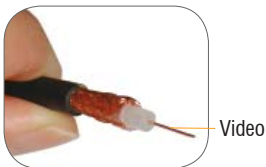
MODEL	E-LSM-713
Display Size	7"
Resolution	1440 x 234
Brightness	500 cd/m ²
Display Mode	4:3 or 6:9
Video Input	2x (1V p-p 75 Ohm)
Video Output (RCA)	1x (1V p-p 75 Ohm)
Audio Input	1x (1V p-p 10K Ohm)
Operating Temperature	-30 ~ 85°C
Dimensions (with case)	200 x 150 x 65mm
Power Supply	9-13 VDC(6.2 Watt) 520mA

CABLES

For Video



E-POWER-AX-MIL



E-COAX-RG59U

CONNECTORS & ADAPTORS



E-LOCKBOX

Vandal Proof PC DVR Enclosure



MODEL	E-LOCKBOX
Usable Internal Space (mm)	680 (d) x 530 (h) x 260 (w)
Approx. Weight	30 Kg

POWER SUPPLIES

12 VDC Regulated Power Supplies

We recommend the use of our regulated 12 VDC power supplies for reliable performance and stable picture quality.



E-PW804
12 VDC; 4 A (8 way)



E-PW816R
12 VDC; 8 A (16 way)



E-PR81612R
12 VDC; 8 A (16 way)



E-RPS12V800
12 VDC; 800 mA



E-RPS12V1000
12 VDC; 1A



E-RPS12V2000
12 VDC; 2 A



E-RPS12V3000
12 VDC; 3 A



E-SMPS12V5000
12 VDC; 5A

E-SIGN1

ABS CCTV Warning Sign - 210 x 971 mm



CCTV TRAINING

Eagle CCTV is proud to present the ultimate CCTV Training Course! This is a 3 day course of intensive, interactive, in depth study of all major CCTV concepts and applications. This course is the basis for an entry level CCTV professional and established CCTV personnel will also find this course extremely beneficial! We have a fantastic facility, with professionally fitted practical rooms to allow all participants to get hands-on experience.

FEATURES

- * Introduction to CCTV
- * Video Signalling
- * Cabling & Connectors
- * Cameras
- * Introduction To Lenses
- * Introduction To Lighting
- * PTZ Cameras
- * IP cameras & video servers
- * Digital CCTV explained



DVR Room



Theory Room



Practical Room



Illumination Room

Cape Town Head Office

Tel: +27 21 423 4943
Fax: +27 21 424 4637
Tollfree: 0800 233322 (RSA only)
31-35 Hout Street,
Cape Town, 8001
PO Box 4376
Cape Town, 8000
South Africa

Gauteng Office

Tel: +27 12 330 0303,
Fax: +27 12 330 3635
08600 EAGLE
729 Frederika Street, Rietfontein,
Pretoria, 0002

Distributed by: